



Mx^{*}Pro⁵

Next-generation power & versatility.
Maximum peace of mind.





Open-protocol freedom. Maximum versatility.

When it comes to what's needed for each site, we believe our panels' specifiers and installers know best.

Packed with powerful, flexible features and compatible with the leading wired and wireless protocols, our multiprotocol approach puts Advanced customers in complete control.

Creating a safer future



Discover our next-gen MxPro 5

Contents

| | |
|---------------------------------|----|
| About Advanced | 4 |
| Next-Generation MxPro 5 | 6 |
| Next-Generation Basecard | 8 |
| MxPro 5 Features | 10 |
| MxPro 5 System Diagram | 14 |
| MxPro 5 Panels | 16 |
| Complete False Alarm Management | 17 |
| Fire Panel Software | 18 |
| Technical Support | 21 |
| Sustainability | 22 |
| Networking | 23 |
| MxPro 5 Parts List | 24 |



Advanced – Made in the UK. Trusted around the world

At Advanced, we're committed to creating a safer future. We deliver fire protection and life safety solutions that protect people and property in more than 80 countries across the globe.

Our products are shaped by decades of research and development expertise as well as ongoing investment in new technologies. This ensures they provide years of high performance and reliability – for ultimate peace of mind.

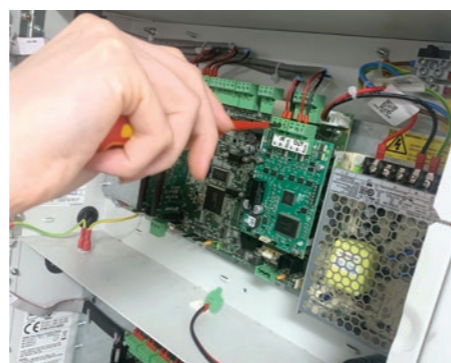
Everything we deliver is rigorously tested and approved to exacting quality standards – which is why Advanced products are trusted by customers the world over and synonymous with quality, performance and ease of use.



Advanced Headquarters, Newcastle, UK

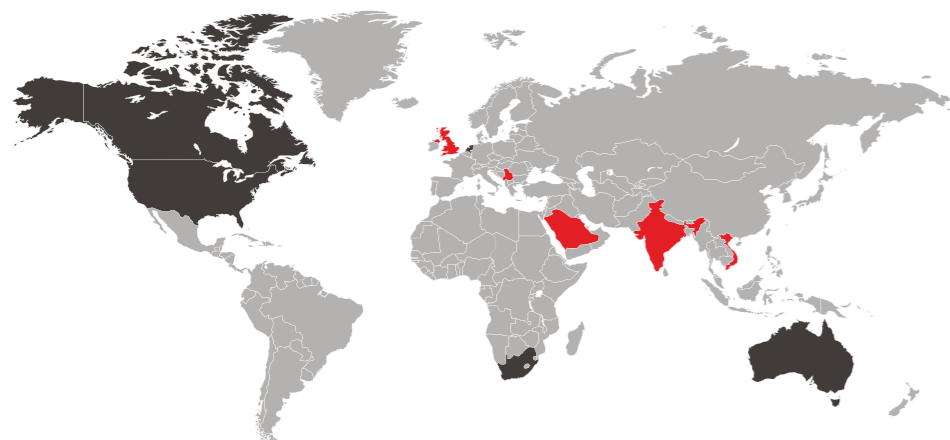
We understand that few fire protection challenges are the same, so as well as our mass-customised ranges, we also offer fully-customised solutions. This flexibility gives you complete control over the functions, format and finish of products to suit your site's unique specification.

We are dedicated to providing excellent service and have an international network of offices and agents to help you access sales support with ease – wherever you are in the world.



In addition, our training and technical services are free of charge to all our direct customers and consistently rated as excellent.

For added reassurance, Advanced is part of the safety sector of FTSE 100 company Halma plc. This global group of life-saving technology companies has a clear purpose to grow a safer, cleaner, healthier future for everyone, every day.



- Advanced & Halma sales representatives
- Strategic and OEM partners
- Distributors and system integrators in key locations worldwide



University of Belgrade, Belgrade, Serbia



HMS Belfast, London, UK

MxPro⁵ protects...



London Underground, London, UK



22 Bishopsgate, London, UK



University of Edinburgh, Scotland, UK



R&B Fashion, Doha Mall, Qatar



The Institute of Oncology, Ljubljana, Slovenia



King's Cross Western Concourse, London, UK

The next-generation

For over a decade, the MxPro 5 has been reliably delivering fire safety peace of mind in buildings across the world.

And while the panels' looks and dependability haven't altered, the technology and software driving them is constantly evolving – keeping them – and you – one step ahead in a fast-changing fire industry.

The open-protocol MxPro 5 you know and trust now features easy cloud connectivity, our simplest ever

programming and our fastest processing power to date. It's even more sustainable too, and the 4-loop variant has achieved an Environmental Product Declaration (EPD).

Here you can discover all the benefits of our latest panels and learn why choosing Advanced puts you at the forefront of fire safety...



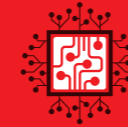
Our MxPro 5 4-loop panel has achieved an Environmental Product Declaration (EPD).



MxPro 5 fire panels have been certified by FM Approvals, enabling them to carry the FM APPROVED diamond, one of the most prestigious certification marks in the world.

Our most versatile panel

The upgraded MxPro 5 brings you a sustainable upgrade option for existing systems, and a host of other new benefits.



Upgraded processor and memory

Faster performance of power-up, configuration download, system monitoring and notifications.



Next-generation loop-driver card

Our MXP-568 loop driver card enables a wide range of features and support for leading device protocols.



Improved power supply unit

Easier replacement, improved support for third-party equipment and longer battery life.



Quicker, more intuitive programming

Our new-style ConfigTool provides a much-improved user experience, easier navigation, support for more complex cause and effect programming, a design checker, and over 10 times quicker transfer of configuration settings (typically under 30 seconds).

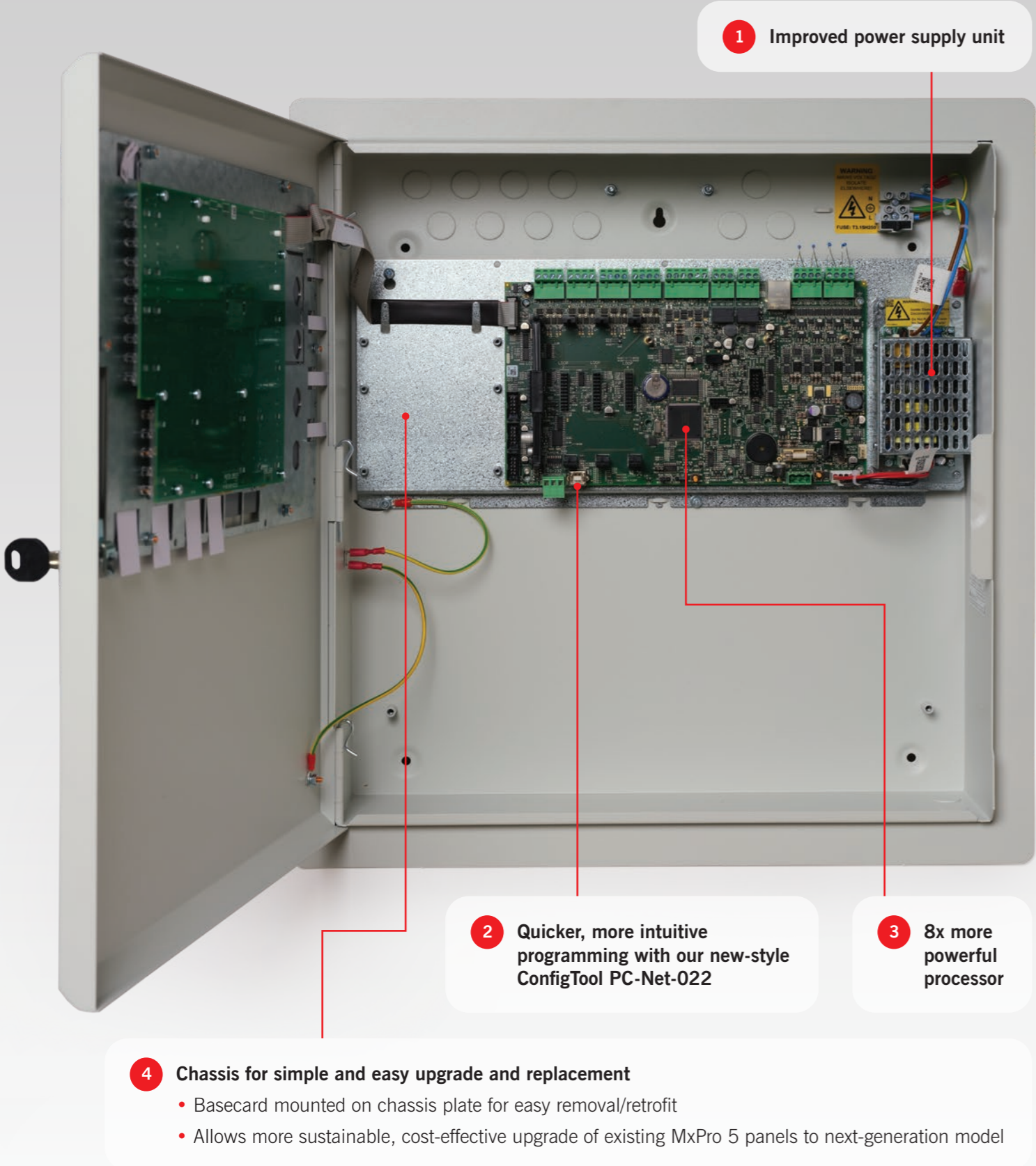


Increased configuration options

Support for more complex cause and effect programming with increased point configuration and enhanced logic, using the latest Windows technology.



New basecard, new advantages



1 Improved power supply unit

2 Quicker, more intuitive programming with our new-style ConfigTool PC-Net-022

3 8x more powerful processor

4 Chassis for simple and easy upgrade and replacement

- Basecard mounted on chassis plate for easy removal/retrofit
- Allows more sustainable, cost-effective upgrade of existing MxPro 5 panels to next-generation model

The updated basecards for our 1-loop, 2-loop, 4-loop and 8-loop MxPro 5 panels provide a host of new benefits, including intuitive commissioning, a more efficient battery performance and a smoother user experience overall.

Basecard comparison:

| Topic title | Gen-1 basecard | Gen-2 basecard |
|--|--|--|
| 1 Power supply unit: | Integrated into basecard | Upgraded and separate from basecard for easier replacement and integration with third-party equipment |
| Menu navigation: | Limited menu navigation responsiveness | Intuitive menu navigation supports quick and easy installation and commissioning |
| 2 Configuration software: | Not forward compatible with next-generation basecard. Uses PC-Net-003 configuration software | PC-Net-022 featuring user-friendly interface and navigation, including improved cause and effect and backwards compatibility |
| Download time: | Panel/PC average download time of 4 minutes | Connection to PC in less than 30 seconds |
| 3 Memory: | Memory size limited to 512KB x 8 | 1MB x 8 providing improved capabilities and functionality especially on larger fire systems |
| Number of points: | 1000 | 2000 |
| Input events: | 250 | 2000 |
| Logic terms: | 1500 Apollo/Hochiki 500 Argus and Nittan | 2000 |
| Logic statements: | 100 | 250 |
| Logic lines: | 1500 Apollo/Hochiki 500 Argus and Nittan | 3000 |
| Output group lines: | 1150 | 2000 |
| 4 Chassis for simple and easy upgrade and replacement: | Basecard mounted on chassis plate for easy removal/retrofit | Easy replacement of the basecard allows more sustainable, cost effective upgrade of Gen-1 MxPro 5 panels to Gen-2 |

MxPro⁵ More power. More versatility. Maximum peace of mind.

The next-generation MxPro 5 combines valuable new features with the familiar benefits that have made this panel so versatile and popular..

Our open protocol flexibility:

- Gives you the freedom to match the best-performing panel with the most appropriate detector range for the site
- Means no tie-ins to expensive maintenance contracts and restrictive agreements
- Includes intuitive programming, powerful networking, comprehensive cause and effect, false alarm reduction and unique diagnostic features that put you in complete control of your fire protection for total fire safety peace of mind.

Our proven fire protection:

- Is fully approved to EN54 Parts 2 and 4
- Is suitable for use across a wide range of locations – whether networked to protect hospital complexes and large public transport systems, used in combination with building management systems in high-rise commercial developments or chosen to safeguard historical artefacts in historic settings
- Offers a reliable, scalable solution, backed up by lifetime technical support.



Easy to install and use

MxPro 5 panels are EN54-approved and simple to install, configure and use.

- Easy-fix removable chassis and in-built software make MxPro 5 fire panels simple to set up
- Powerful networking, extensive configuration options and comprehensive cause and effect put you in complete control
- Intuitive menus, with simple click-and-select programming, for simple, easy commissioning
- Support for intelligent remote terminals, I/O drivers and BMS interfaces make light work of connecting with building management systems
- Help, advice, tips and training are all on hand from our experienced technical support team. We also have an extensive collection of 'how to' videos on our YouTube channel.



Scalable and versatile

We know that sites can expand, and fire protection requirements change and evolve over time. That's why we've designed MxPro 5 to be scalable and versatile, able to adapt as required with minimal fuss or disruption.

- Standalone one, two, four or eight loop formats let you choose the panel size that meets your requirements and budget
- A choice of remote display terminals includes TouchControl – our 10-inch touchscreen with interactive maps and zone plans ideal for public reception areas
- Up to 254 devices per loop (depending on chosen protocol) and an overall capacity of over 200,000 devices per network
- Every panel is networkable with up to 200 network nodes and 2,000 fire detection zones
- Panels can support wired and wireless loops, or a hybrid of both (depending on chosen protocol)
- Compatibility with a choice of leading detector partners – Apollo, Argus, Hochiki and Nittan to suit your exact needs.



Packed with premium features

Every MxPro 5 panel comes with a host of advanced features built in as standard, giving you peace of mind that you won't need to buy expensive add-ons in the future.

- Unique diagnostic features include 'scope on board' to provide panel readings from any loop, making it easy to identify and investigate issues
- Network diagnostic tool helps prevent fires and faults from being transmitted across the network
- Built-in multimeter measures all voltages and currents across the system, so you can speed up the commissioning process by identifying voltage/current levels in real time
- Every panel includes AlarmCalm false alarm management software to help you minimise unwanted alarms, with 200 programmable false alarm management 'building areas' per panel
- Ability to monitor the circuit from any panel or remote terminal and see a complete device history on every panel
- Standard peripherals include direct USB and RS232 PC connections, and peripheral expansion is built in for added peace of mind
- 20 built-in, fully programmable LEDs as standard without the need to buy a separate LED zone card
- On-board or optional remote battery temperature sensor ensures optimum operational efficiency and life
- 4 programmable push buttons on the front of the panel for user customisation according to the fire system's needs
- 5,000 event and diagnostic, and 500 fire event log entries, for comprehensive tracking and auditing
- Timed enablement of disabled zones, input and output devices, to program and manage fire system response and reporting
- Modular in construction, with mass customisation options including the ability to program your own company logo to appear on the fire panel screen.



Powerful, flexible service reporting

Every MxPro 5 panel includes an inbuilt, easy-to-use, Windows-based service tool which saves you time and money by providing easy, instant access to historic and real-time device data, and shows proof of servicing at a glance.

- Download service reports, inspect the device history and keep track of service schedules for safety audit compliance
- Customisable data filters make it easy to focus on potential trouble spots and ensure they're checked and tested during servicing
- Predict which devices are becoming contaminated so you can clean/replace them before they cause a false alarm
- Customise reports to show the data you need and export it as PDF, Excel or HTML files to prove compliance simply and efficiently.

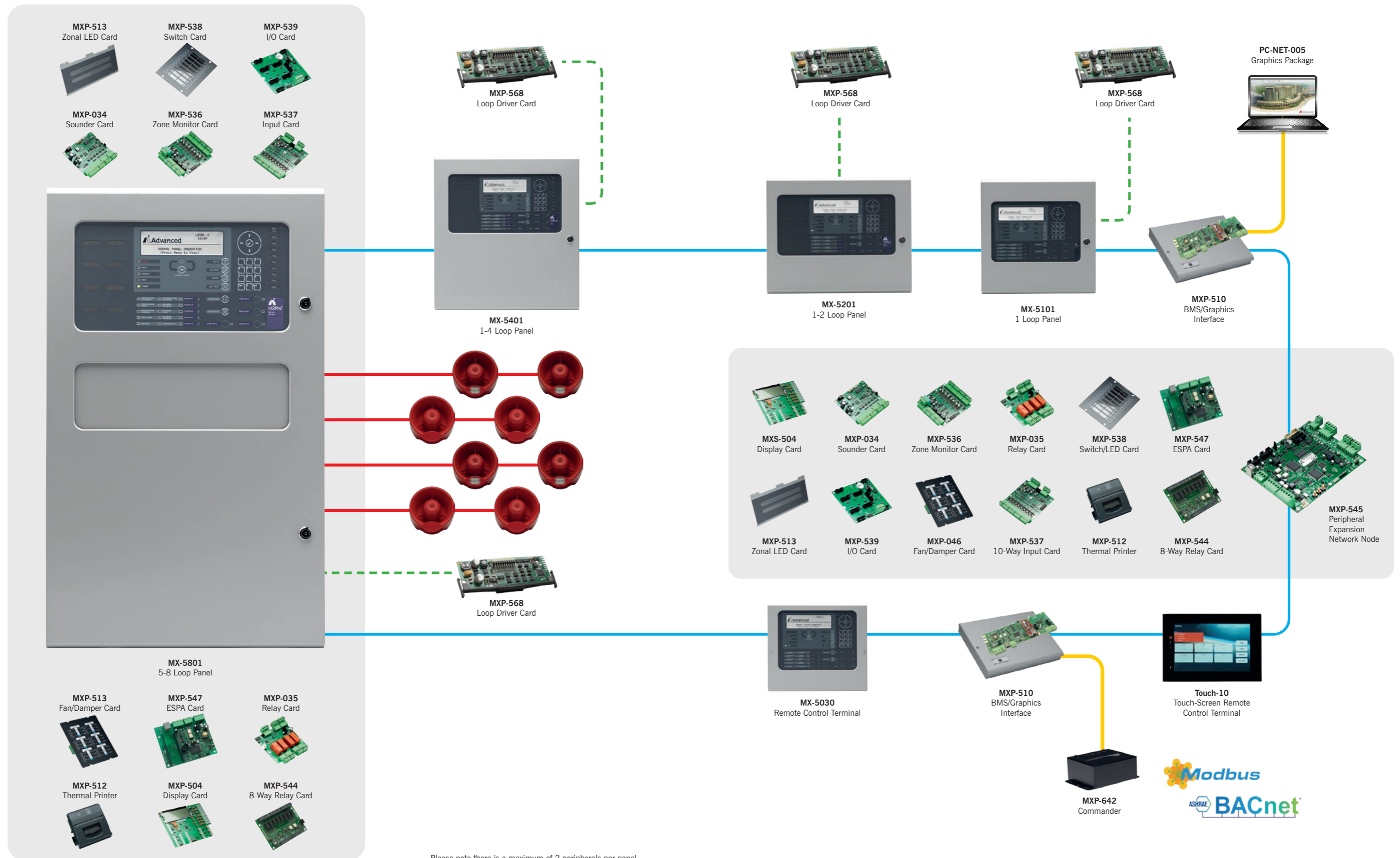


MxPro⁵ Features

| Hardware Features | |
|--|--|
| Display backlight | White backlit display Improved efficiency with programmable dimming options Software-driven contrast adjustment via menu |
| PC connections | USB and RS232 – independently operated |
| Peripheral expansion bus | Built in as standard on all panels Extended range of P-Bus option cards |
| Wiring fault monitoring | EN54-2: Open circuit, short circuit EN54-13: Continuous checking for increases in resistance, (loose terminations), partial shorts etc. |
| Control keys | Mute, Silence, Reset, LED Test, Resound, Evacuate and dedicated More Alarms buttons on control panels and large repeater Configurable keypad repeat keys |
| Front panel push buttons | 4 programmable function buttons on control panels and large repeater |
| Battery charging | Charger current (up to 2 amps), voltage and temperature available from any display on a network Built-in or remote battery temperature sensor |
| Zone LEDs | 20 integral red LED indicators included as standard on control panels and large repeater Can be assigned to any fire zone or programmable for other uses Up to 200 additional LEDs with Large, Deep and Extended enclosures. (Up to 50 in Medium enclosure) Options include red, yellow and (bi-colour) red/yellow or green/yellow column format with slide-in labels |
| Programmable input | Dedicated monitored switch input as standard on all panels |
| Programmable key switch inputs | Built-in as standard on all panels |
| Printer | Optional on-board printer. No additional battery pack required. Integral paper feed button. Printer fault conditions displayed on panel, prints customer logo |
| Power | Aux supply output @ 500mA 24V |
| Standards | Approved to EN54 Parts 2 and 4 |
| Software Features | |
| Independent general event and fire event logs | Yes – on all panels and repeaters Any panel can be configured as a network-wide main event log |
| Event log entries | 5,000 + 500 fire Additional logging for investigation delays and any enable/disable actions |
| Timed disable options | Permanent or automatic timed re-enablement of any input or output device |
| Enable/disable inputs by zone | <ul style="list-style-type: none"> • All inputs • Selected inputs • Only automatic inputs • Only manual inputs • All other inputs |
| Enable/disable outputs | Disable by output purpose Configurable disable outputs menu options include: sounders, relays, beacons, fire routing, fault routing, fire protection, pager, all or selected Disablement of outputs across network configurable by sector mask |
| Real-time clock | Yes - no lithium battery required |
| Languages | Supports multiple different character sets (code pages) and languages |

| Network Features | |
|--|---|
| Max devices per network | 200,000 |
| Max nodes on network | 200 |
| Sectors | 200 |
| Maximum fire zones displayed | 2,000 on all panels |
| Programming Features | |
| Independent building areas for false alarm management | 201 areas per panel Local or global alarm acknowledgement facility |
| Zone LEDs | All LEDs fully programmable PC configuration presented graphically Primary/secondary activation |
| Buzzer options | Smart latch of faults Fault notification can resound daily Service option to inhibit by time clock |
| Programmable input actions | 22 – including new supervisory, fire routing and fire protection confirmed + alarm acknowledgement actions |
| Output purpose | Output purpose configurable |
| Output ringing styles | 40 – output activation priority configurable |
| Zone qualifiers | 24 categories of zone qualifiers |
| Logic statements | 3,000 logic lines – programmable options: <ul style="list-style-type: none"> • Inputs • Any 2 inputs • Zone qualifiers • Any 2 zones • General events • Time clocks |
| General events | 36 categories |
| Blocking rules | Programmable blocking rules – by general event or output groups |
| Service and Diagnostic Features | |
| Device history | For every device the time and date of the: <ul style="list-style-type: none"> • Last activation • Last test • Last disable • Last enable • Date created |
| On-board digital storage scope | Yes |
| View panel voltages and currents | Available from any MxPro 5 repeater or panel on the network |
| View panel status | View status of all panel circuits across network Firmware version of all internal hardware and peripheral devices can be viewed at the panel |
| Firmware updates | All hardware flash upgradable via panel USB or serial port |
| Detector status information | New warning state allows any devices nearing drift contamination limits to be identified during routine servicing before a fault level is reached |
| Service tool | Download device information Extract event log information Download device history View drift (contaminated) status of detectors Network simulation and test facility |

MxPro⁵ System diagram



Please note there is a maximum of 2 peripherals per panel.



MxPro⁵ Options

1 Loop



- Single loop
- Small enclosure
- Maximum 7Ah internal batteries
- 20 programmable LEDs
- Optional programmable key switch
- Programmable input
- Medium, large and deep enclosure options

1-2 Loop



- Order an extra loop driver card for a 2-loop panel
- Medium enclosure
- Maximum 12Ah internal batteries
- Up to 50 additional programmable LEDs
- Up to 8 programmable key switches or 4 plus printer
- Plexi-glass door option
- Large and deep enclosure options

1-4 Loop



- Order an extra loop driver card for a 2-loop panel, 2 cards for a 3-loop panel and 3 for a 4-loop panel
- Large enclosure
- Maximum 17Ah internal batteries
- Up to 200 additional programmable LEDs
- Up to 8 programmable key switches or 4 plus printer
- Plexi-glass door option
- Deep and extended enclosure options

2-8 Loop



- Order an extra loop driver card for a 2-loop panel, 2 for a 3-loop panel, 3 for a 4-loop panel etc
- Extended enclosure
- Maximum 45Ah internal batteries
- Up to 200 additional programmable LEDs, 2 x switch cards or mimic
- Up to 8 programmable key switches or 4 plus printer
- Plexi-glass door and external battery box option

Integrated Peripheral Bus

- Integrated P-Bus as standard on all MxPro 5 panels
- Up to 32 expansion cards can be added to an MxPro 5 panel
- Peripheral expansion option cards include:
 - 4-way relay card
 - 4-way sounder card
 - 10-way monitored input card
 - 10-way relay card
 - Conventional zone card (8 class B or 4 class A zones + 3 programmable relays)
 - 16-way push button/48 LED card
 - 16-way input/48 output (direct drive LED outputs)
 - Fire and fault routing/protection card
 - Redundant controller

Rack Mount

- Rack-mountable control panels
- Additional 16U and 20U high IP55 enclosures
- Rack-mount peripheral chassis plate, LED and switch-card module options
- Dedicated mimic door option

Remote Terminals

- Four types available:
 - TouchControl 10" touchscreen with active maps and zone plans, plus a customisable home screen for your logo or promotional presentations
 - Remote display terminal
 - Remote control terminal with additional mute, silence, reset and resound keys
 - Remote control terminal with additional LED status indication, four programmable push buttons, mute, silence, reset, resound, lamp test and evacuate keys
- Optional level 2 access enable key switch (not TouchControl)
- Integrated standard or fault-tolerant network interface with screen termination point
- Programmable display for up to 2,000 zones along with sector-based controls



Find out more about TouchControl



AlarmCalm Complete False Alarm Management.

MxPro 5 features the power and flexibility of our in-built AlarmCalm false alarm management and reduction software.

This is unique in the UK in offering a solution to false alarms that meets the requirements of BS EN54-2.

Clauses 7.11 & 7.12 in that standard are often referred to as dependencies, verification delays, investigation delays or delays to outputs.

AlarmCalm uses fast hardware, powerful software and optional, intelligent loop devices to build a total solution to false alarms that's versatile and easy to configure. You can design a solution around the needs of your specific site and this can radically reduce the disruption, inconvenience and costs associated with unwanted alarms.

Optional verification button



This is an intelligent verification device that can be installed on the loop and works with the AlarmCalm software to allow occupants to acknowledge a fire alarm signal locally, if they believe it has been triggered accidentally.

AlarmCalm features:

- **Versatile cause and effect**
In-depth control over alarm verification and investigation delays to outputs.
- **Customised management for any site**
Divide your building(s) into 'building areas', each with quick-to-apply unique or group false alarm management settings. 50 building areas per panel.
- **Unlimited points**
No restriction on the number of points in a building area and configurable by point.
- **Global acknowledgement**
Panel inputs can be programmed to manage verification and output delays.
- **Flexible verification**
Options include: set verification by building area, day/night, on/off, change verification times, verification by second device or device mode change.
- **Full event log**
All verification and output delays recorded in panel event logs.
- **Multiple verification inputs and outputs**
Inputs can include optical, heat and multisensors, callpoints and AlarmCalm button or other input modules. Outputs can be sounders, beacons and relays etc. Sounder ring styles can be configured.
- **Failsafe operation**
Total control over verification times. Users can only extend verification once. Set maximum number of areas in verification before full fire is signalled.
- **Easy management of outputs**
Output delays are handled in exactly the same way as verifications, making setup very simple.

AlarmCalm is not compatible with Apollo Core protocol.



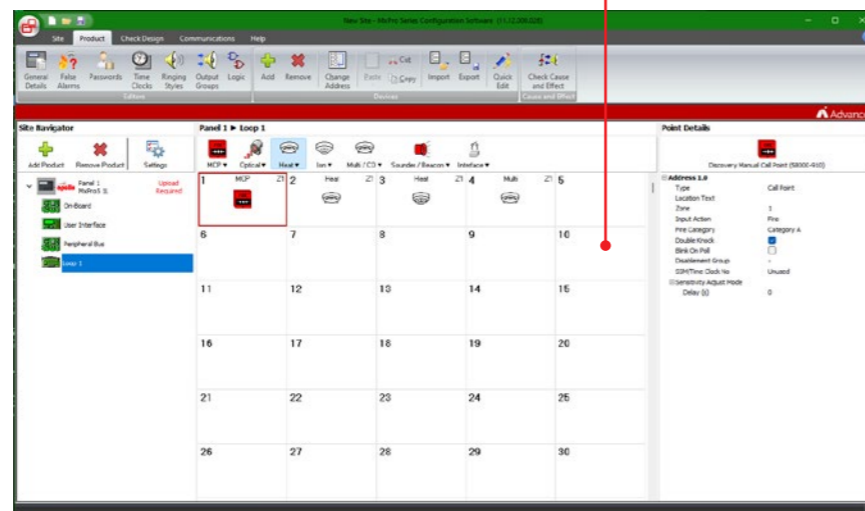
Scan the QR code to find out more about AlarmCalm

Our most intuitive configuration software yet

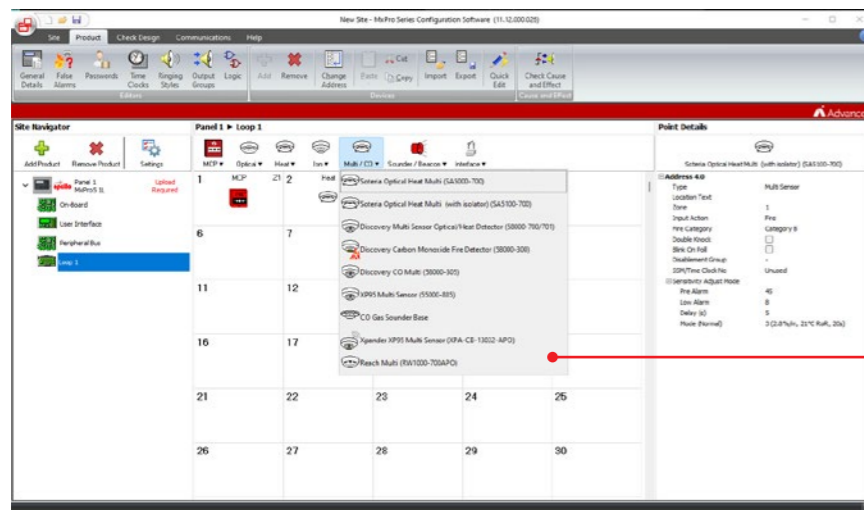
The next-generation MxPro 5 uses our latest ConfigTool (PC-Net-022) – for faster, more flexible, fuss-free setup.

Improved user interface

- We've updated the user interface with speed and efficiency in mind. You can access most operations from the program menu, aided by a toolbar with descriptions of each function and easy-to-follow icons.
- We've also optimised the use of the available screen space to ensure more information is visible. You can see all the devices fitted by address in a grid layout. Simply by selecting an address, you can configure all device inputs and outputs from the same screen.
- Plus, it's so much faster, with no delays even when setting up the largest of site designs.



1 Loop grid with right-hand panel for settings/selections by device

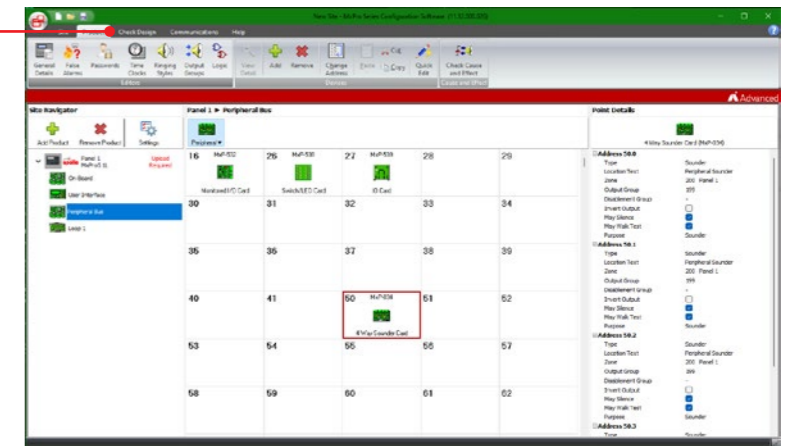


2 Drop-down menu lists make device selection easy

Design checker

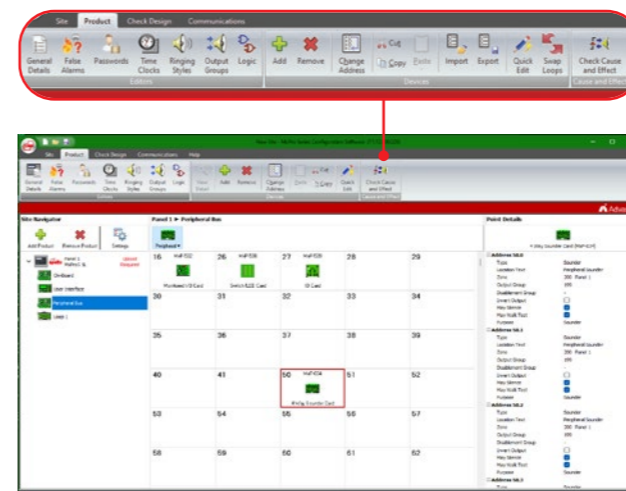
3 Enhanced menu navigation

- You can run an in-depth analysis of over 80 checks to safeguard against common site design issues. By flagging potential problems early, you can avoid uploading flawed designs, and save fault-finding time.



Cause and effect checking

- A sophisticated cause and effect design checker has been incorporated to allow a site design to be verified as it is constructed. It's possible to prove a design and correct any mistakes without actually having to go to site.



Fast communication

- Transfer of the configuration settings to/from the panel typically takes just 30 seconds.
- Super-fast file loading and saving saves you time and money, even when working with large, complex site designs.
- You can import from another design and choose from more settings than ever before. Plus, to ensure seamless working between Gen-1 and Gen-2 MxPro 5 installations, you can import files from PC-Net-003.

Versatile software

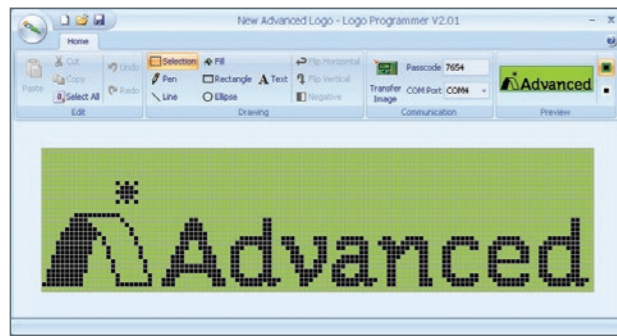
In addition to the ConfigTool, you have access to a range of other software designed to make the setup and use of MxPro 5 panels fast, efficient and flexible.

We are continually developing our software for the MxPro 5 panel range, adding new features and performance enhancements.

Our position in the global fire industry means we help guide legislation and can implement software changes quickly, keeping our systems right up to date. We also listen closely to our customers and often produce features for specific client requirements.

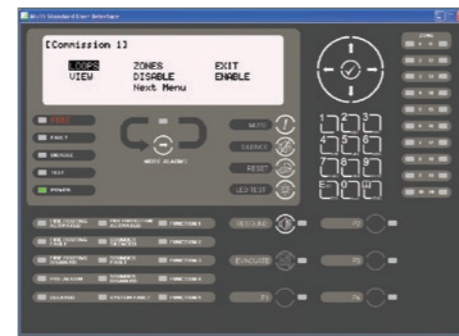
LogoTool

- Allows the installer's logo to be displayed on the panel's graphical LCD display during normal operation
- Uploads standard bitmap images
- Tool allows creation of logos
- JPG and GIF images can be imported



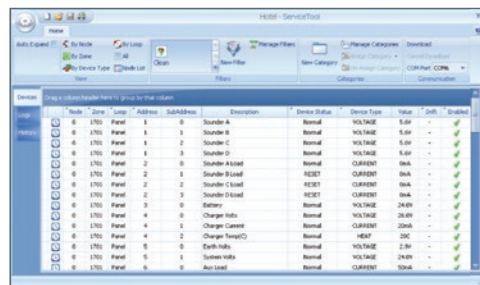
TerminalTool

- Now part of PC-Net-022
- Virtual panel display supports remote interrogation
- Direct USB/RS232 or remote modem/IP connection
- Real-time status information and control
- TerminalTool (PC-Net-004) is no longer available



ServiceTool

- Extract device information and event logs from single or multiple panels
- Device history including last activation, test, enable, disable and date created
- User-defined filters allow data to be grouped and searched in many different ways
- View device status, analogue values and drift (contaminated) information
- Network simulation and test feature
- Categorise events and create user-defined reports

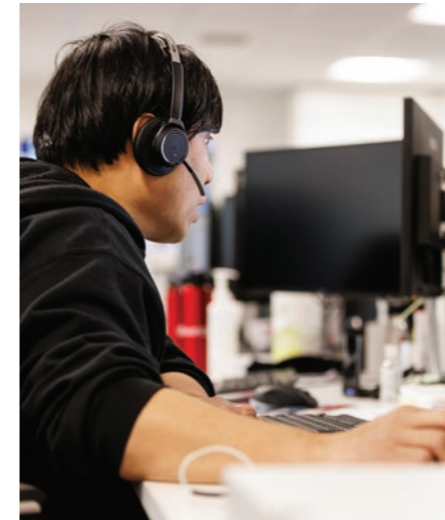
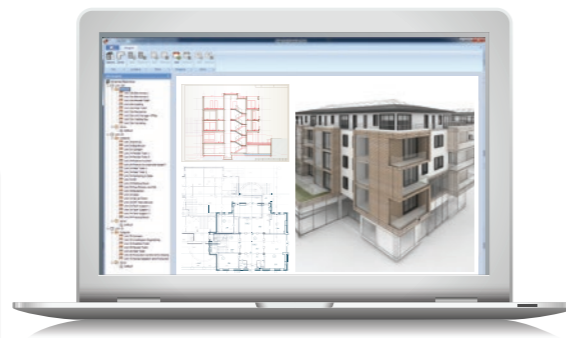


Scan here to find out more about ServiceTool



MapApp

- Used to easily add site maps to TouchControl touchscreen repeater
- Can use any illustration from a photo to a line drawing, isometric or plan
- Simply draw hotspots onto drawing to add fire zones
- Export to microSD card to add to TouchControl RCT



Technical support

Highly-rated support. Available by telephone and online.

As an Advanced customer, you have access to a host of helpful advice and support.

This includes a wealth of online information, from 'how to' videos to datasheets and detailed product manuals. Simply complete one of our online forms and you'll be able to access a range of additional services, previously available to those with an Advanced360 account.

Services include:

- **Technical support** – available by telephone and online by raising a support ticket, which one of our experienced technical support engineers will answer.
- **Training** – direct customers can book training online and will be sent training certificates by email. If you need to access a previous training certificate, simply complete an online request form. All non-direct customers should book training through their distributor.



- **Software** – download software and save your software packages by installation/site.
- **Literature** – download manuals, specifications, approved partner certificates, technical information and more.
- **Warranty** – download our warranty statement.

advancedco.com/training-support

Creating a safer future



We are committed to 'creating a safer, sustainable future', both in our own right, and as a member of Halma plc, a FTSE 100 company with a shared purpose to 'grow a safer, cleaner, healthier future for everyone, every day'.



As part of our commitment to sustainability, we are working hard to find ways to reduce our environmental impact. We choose environmentally friendly methods of manufacture wherever possible and actively seek out more sustainable ways of operating across our business.

Our Gen-2 MxPro 5 range incorporates elements of sustainable design to make it easy for you to benefit from next-generation features on existing Advanced systems – simply by swapping basecards.



MxPro 5 & Axis EN 4-Loop 000766

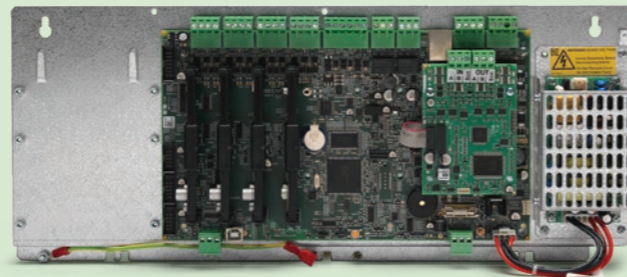
Our 4-loop panel has achieved an Environmental Product Declaration (EPD).

[Find out more](#)



How to swap basecards:

Mounted on an easy-fit chassis plate, it is a straightforward process for trained engineers to switch the basecard, avoiding the need to replace entire hardware installations.



Find out more about our sustainability work

Visit our website or scan this QR code



We are an ISO 14001 accredited company, dedicated to reducing our impact on the environment.



Advanced networking

Our high-performance network technology works across the MxPro 5 range, delivering the easiest setup and best-performing fire panel networks available.

Easy connection

- Connect all MxPro 5 control panels, remote terminals and network peripherals together using fire-resistant, two-core cable
- Distribute panels throughout the building for lower wiring costs
- Caters for the smallest two-panel network through to the largest 200 panel, wide-area, networked system
- Simply add and connect a network card to any MxPro 5 control panel or remote terminal

Zoning

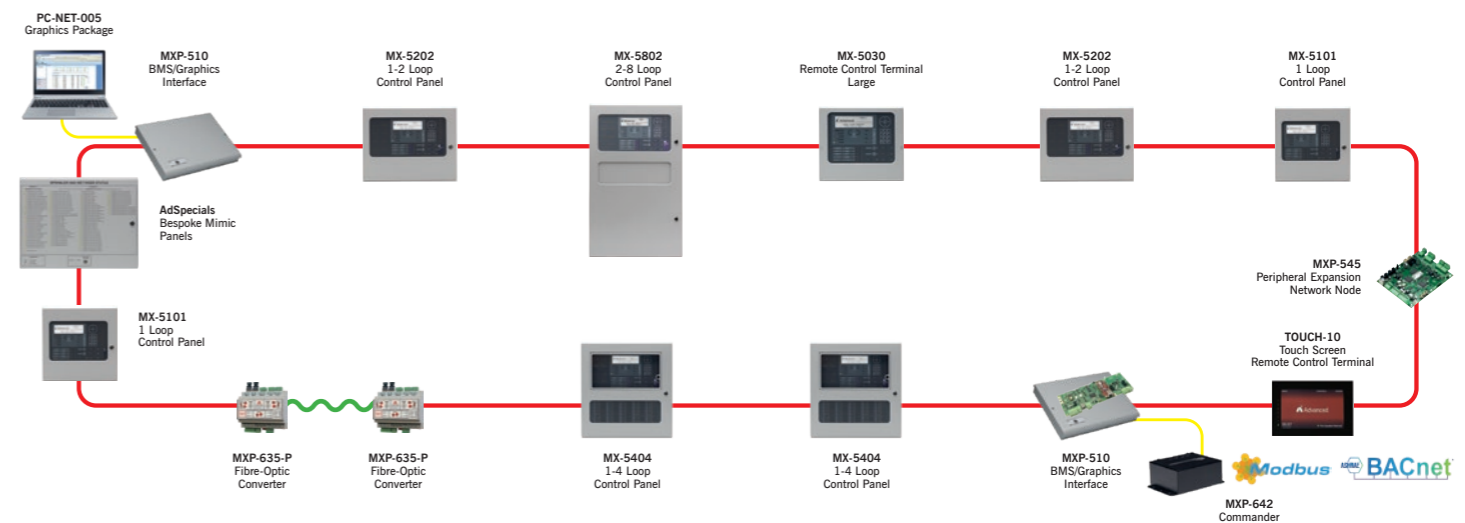
- Networked systems can share up to 2,000 zones
- Autolearning the devices, adding text and assigning zone numbers is easy
- All other nodes on the network are instantly aware of a panel as soon as it is given a valid network node address

Diagnostic and status information

- All panels provide valuable diagnostic and status information and have the facility to prevent the transmission of fires or faults during commissioning
- Intuitive software enables easy configuration of complicated cause and effect for more complex systems
- All configuration data is contained within one user-friendly network configuration file

Peer-to-peer system

- Does not rely on a single 'master' panel to function
- Information from any input or output device can be passed over the network and displayed on any MxPro 5 control panel or remote terminal
- Details include fire, general alarm, pre-alarm, fault, control inputs and disablement



| Type of network | Standard | Fault tolerant |
|---|--|--|
| Typical use | Sites where one panel per building controls evacuation | Sites where more than one panel per building controls evacuation |
| Setup | Standard network card: MXP-503 | Fault-tolerant network card: MXP-509 |
| Maximum cable length | Up to 1.5km | Up to 1.5km between nodes |
| No. of nodes | 32 (50 with signal buffer) | 200 |
| No. of zones | 2,000 | 2,000 |
| Typical time to communicate first event | 1 second | 3.5 seconds |

MxPro⁵ Parts list

| Product Code | Description |
|---------------------------------------|--|
| Apollo & Hochiki Protocols | |
| MX-5101 | 1-Loop Fire Panel – small enclosure |
| MX-5101M | 1-Loop Fire Panel – medium enclosure |
| MX-5101L | 1-Loop Fire Panel – large enclosure |
| MX-5101D | 1-Loop Fire Panel – deep enclosure |
| MX-5201 | 1-2 Loop Fire Panel c/w 1 Loop Card – medium encl. |
| MX-5201L | 1-2 Loop Fire Panel c/w 1 Loop Card – large encl. |
| MX-5201D | 1-2 Loop Fire Panel c/w 1 Loop Card – deep encl. |
| MX-5401 | 1-4 Loop Fire Panel c/w 1 Loop Card – large encl. |
| MX-5401D | 1-4 Loop Fire Panel c/w 1 Loop Card – deep encl. |
| MX-5401E | 1-4 Loop Fire Panel c/w 1 Loop Card – extended encl. |
| MX-5802 | 2-8 Loop Fire Panel c/w 2 Loop Cards – extended (standard network) |
| MX-5802/FT | 2-8 Loop Fire Panel c/w 2 Loop Cards – extended (fault-tolerant network) |

All panels are supplied with one loop driver card fitted (for 1, 2 or 4-loop panels) or two loop driver cards for an 8-loop panel. Additional cards can be ordered separately.

| Apollo Core Protocol | |
|-----------------------------|--|
| MX-5101A | 1-Loop Fire Panel – small enclosure |
| MX-5101AM | 1-Loop Fire Panel – medium enclosure |
| MX-5101AL | 1-Loop Fire Panel – large enclosure |
| MX-5101AD | 1-Loop Fire Panel – deep enclosure |
| MX-5201A | 1-2 Loop Fire Panel c/w 1 Loop Card – medium encl. |
| MX-5201AL | 1-2 Loop Fire Panel c/w 1 Loop Card – large encl. |
| MX-5201AD | 1-2 Loop Fire Panel c/w 1 Loop Card – deep encl. |
| MX-5401A | 1-4 Loop Fire Panel c/w 1 Loop Card – large encl. |
| MX-5401AD | 1-4 Loop Fire Panel c/w 1 Loop Card – deep encl. |
| MX-5401AE | 1-4 Loop Fire Panel c/w 1 Loop Card – extended encl. |
| MX-5802A | 2-8 Loop Fire Panel c/w 2 Loop Cards – extended (standard network) |
| MX-5802A/FT | 2-8 Loop Fire Panel c/w 2 Loop Cards – extended (fault-tolerant network) |

| Argus Protocol | |
|-----------------------|--|
| MX-5101V | 1-Loop Fire Panel – small enclosure |
| MX-5101VM | 1-Loop Fire Panel – medium enclosure |
| MX-5101VL | 1-Loop Fire Panel – large enclosure |
| MX-5101VD | 1-Loop Fire Panel – deep enclosure |
| MX-5201V | 1-2 Loop Fire Panel c/w 1 Loop Card – medium encl. |
| MX-5201VL | 1-2 Loop Fire Panel c/w 1 Loop Card – large encl. |
| MX-5201VD | 1-2 Loop Fire Panel c/w 1 Loop Card – deep encl. |
| MX-5401V | 1-4 Loop Fire Panel c/w 1 Loop Card – large encl. |
| MX-5401VD | 1-4 Loop Fire Panel c/w 1 Loop Card – deep encl. |
| MX-5401VE | 1-4 Loop Fire Panel c/w 1 Loop Card – extended encl. |
| MX-5802V | 2-8 Loop Fire Panel c/w 2 Loop Cards – extended (standard network) |
| MX-5802V/FT | 2-8 Loop Fire Panel c/w 2 Loop Cards – extended (fault-tolerant network) |

| Product Code | Description |
|------------------------|--|
| Nittan Protocol | |
| MX-5101N | 1-Loop Fire Panel – small enclosure |
| MX-5101NM | 1-Loop Fire Panel – medium enclosure |
| MX-5101NL | 1-Loop Fire Panel – large enclosure |
| MX-5101ND | 1-Loop Fire Panel – deep enclosure |
| MX-5201N | 1-2 Loop Fire Panel c/w 1 Loop Card – medium encl. |
| MX-5201NL | 1-2 Loop Fire Panel c/w 1 Loop Card – large encl. |
| MX-5201ND | 1-2 Loop Fire Panel c/w 1 Loop Card – deep encl. |
| MX-5401N | 1-4 Loop Fire Panel c/w 1 Loop Card – large encl. |
| MX-5401ND | 1-4 Loop Fire Panel c/w 1 Loop Card – deep encl. |
| MX-5401NE | 1-4 Loop Fire Panel c/w 1 Loop Card – extended encl. |
| MX-5802N | 2-8 Loop Fire Panel c/w 2 Loop Cards – extended (standard network) |
| MX-5802N/FT | 2-8 Loop Fire Panel c/w 2 Loop Cards – extended (fault-tolerant network) |

| Loop Driver Cards | |
|--------------------------|---|
| MXP-568 | Loop Driver Card – Apollo, Hochiki, Argus |
| MXP-567 | Loop Driver Card – Nittan |

| Remote Terminals | |
|-------------------------|--|
| MX-5010 | Remote Display Terminal (RDT) |
| MX-5020 | Remote Control Terminal (RCT) – small |
| MX-5030 | Remote Control Terminal (RCT) – large |
| MX-5010/FT | Remote Display Terminal (RDT) – fault tolerant |
| MX-5020/FT | Remote Control Terminal (RCT) – small (fault tolerant) |
| MX-5030/FT | Remote Control Terminal (RCT) – large (fault tolerant) |

| TouchControl | |
|---------------------|--|
| TOUCH-10 | Touch-Screen Terminal – standard network |
| TOUCH-10/FT | Touch-Screen Terminal – fault-tolerant network |
| TOUCH-10-SBB | Touch-Screen Terminal Surface Back Box |

| Network Cards | |
|----------------------|---|
| MXP-503* | Network Card – standard network |
| MXP-509* | Network Card – fault-tolerant network |
| MXS-028 | Spare Fault-tolerant Network Interface |
| MXP-030 | Standard Network Booster/Isolator – DIN-rail module |
| MXP-542 | 24VDC – 24VDC Converter/Isolator |
| MXP-635-A | Fibre Optic Converter – active |
| MXP-635-P | Fibre Optic Converter – passive |
| MXP-635-MM | Fibre Optic Converter Multi-Mode |
| MXP-635-SM | Fibre Optic Converter Single-Mode |
| MXP-635-BD/AB | Fibre Optic SFP Module – bi-directional (up) |
| MXP-635-BD/BA | Fibre Optic SFP Module – bi-directional (down) |
| MXP-635/IVIEW | Fibre Optic iView Commissioning Tool (limited) |
| MXP-635/COMM | Fibre Optic iView Commissioning Tool (interactive) |

* Add F for fitted

| Product Code | Description |
|--|--|
| Peripherals & P-Bus Expansion Cards | |
| MXP-034* | 4-Way Sounder Card |
| MXP-035* | 4-Way Relay Card |
| MXP-035-BXP | 4-Way Relay Card with 1.5A PSU – boxed |
| MXP-506 | Routing Termination Card |
| MXP-532* | Routing/Protection Interface |
| MXP-536* | 8-Way Conventional Zone Monitor Card |
| MXP-537* | 10-Way Monitored Input Card |
| MXP-538 | Switch/LED Module – 16 switches, 3 programmable LEDs/switches (red, yellow, green) |
| MXP-539 | Multi-Way I/O Mimic Driver Card – 16 switch inputs and 48 LED outputs |
| MXP-544* | 8-Way Relay Card |

* Add F for fitted

| Other Peripherals | |
|--------------------------|--------------------------------------|
| MXP-501 | Remote Battery Temperature Sensor |
| MXP-505 | Sounder (Pt13) Active EOL |
| MXP-507* | 2-Way Relay Card |
| MXP-512* | Printer Assembly |
| MXS-509 | Spare Paper Roll for MXP-512 Printer |
| MXP-053 | 2-Way Stretch/Latch Input Module |

* Add F for fitted

| AlarmCalm | |
|------------------|---|
| MXP-541A-002 | AlarmCalm Button with Buzzer – Apollo (not supported for Core protocol) |
| MXP-541V-002 | AlarmCalm Button with Buzzer – Argus |

| Key Switches | |
|---------------------|---|
| MXP-511* | Access Enable Key Switch for 5000 |
| MXP-518-001* | Access Enable Key Switch for 5010/5020 |
| MXP-518-002* | Access Enable Key Switch for 5030 |
| MXP-516* | 2-Pos Key Switch – trapped |
| MXP-517* | 2-Pos Key Switch – untrapped |
| MXP-519* | 2-Pos Key Switch – momentary (trapped) |
| MXP-515* | 3-Pos Key Switch – untrapped all positions |
| MXP-515T* | 3-Pos Key Switch – key-free in centre position only |
| MXS-511-KEY | Spare MXP-511 Access Enable Key |

* Add F for fitted

| Network Peripherals | |
|----------------------------|---|
| MXP-545 | PENN – standard network |
| MXP-545/FT | PENN – fault-tolerant network |
| MXP-046 | Damper Interface Module (Apollo protocol) |
| MXP-046-BX1 | Damper Interface Module – boxed (Apollo protocol) |
| MXP-547* | ESPA Pager Interface |
| MXP-547-BX | ESPA Pager Interface – boxed |

* Add F for fitted

| Product Code | Description |
|-----------------------|---|
| LED Indication | |
| MXP-513M-050RD* | 50 Zone Fire (red) |
| MXP-513M-050RY* | 50 Zone Fire (red) + Fault (yellow) |
| MXP-513M-050YL* | 50 Zone Fault (yellow) |
| MXP-513L-050RD* | 50 Zone Fire (red) |
| MXP-513L-050RY* | 25 Zone Fire (red) + Fault (yellow) |
| MXP-513L-050YL* | 50 Zone Fault (yellow) |
| MXP-513L-100RD* | 100 Zone Fire (red) |
| MXP-513L-100RY* | 50 Zone Fire (red) + Fault (yellow) |
| MXP-513L-100YL* | 100 Zone Fault (yellow) |
| MXP-513L-200RY* | 200 Zone Fire (100 x red) + Fault (100 x yellow) |
| MXP-513L-050CRY* | 50 Zone Column Format – Fire (red) + Fault (yellow) |
| MXP-513L-050CRYG* | 50 Zone Column Format (30 x red/yellow and 20 x green/yellow) |
| MXP-513-050RD* | 50 Zone Fire (red) |
| MXP-513-050RY* | 25 Zone Fire (red) + Fault (yellow) |
| MXP-513-050YL* | 50 Zone Fault (yellow) |
| MXP-513-100RD* | 100 Zone Fire (red) |
| MXP-513-100RY* | 50 Zone Fire (red) + Fault (yellow) |
| MXP-513-100YL* | 100 Zone Fault (yellow) |
| MXP-513-200RY* | 200 Zone Fire (100 x red) + Fault (100 x yellow) |
| MXP-513-050CRY* | 50 Zone Column Format – Fire (red) + Fault (yellow) |
| MXP-513-050CRYG* | 50 Zone Column Format (30 x red/yellow and 20 x green/yellow) |

* Add F for fitted

| BMS Interface | |
|----------------------|--|
| MXP-510-BX | BMS/Graphics Interface – boxed |
| MXP-510-BX/FT | BMS/Graphics Interface – boxed (fault tolerant) |
| MXP-510 | BMS/Graphics Interface – card only |
| MXP-510/FT | BMS/Graphics Interface – card only (fault tolerant) |
| MXP-642 | Commander-BACnet/Modbus (IP) Interface (Standard/Basic) – requires BMS-510 |
| MXP-642C | Commander-BACnet/Modbus (IP) Interface (Configured) – requires BMS-510 |
| 23-PSU/250 | Commander Power Supply – 12VDC 2.5A |

| Graphics Software | |
|--------------------------|--|
| PC-NET-005-L1 | Graphical Control Software – standard (up to 3 panels) |
| PC-NET-005-L2 | Graphical Control Software – standard (up to 15 panels) |
| PC-NET-005-L2P | Graphical Control Software – premium (up to 15 panels) |
| PC-NET-005-L3 | Graphical Control Software – standard (up to 200 panels) |
| PC-NET-005-L3P | Graphical Control Software – premium (up to 200 panels) |
| PC-NET-005-SWM | Smart Watch Module |
| PC-NET-005-SWM4R | Smart Watch Module (4 inputs) |
| PC-NET-005-SWM6 | Smart Watch Module (4-6 panels) |
| PC-NET-005-SWM15 | Smart Watch Module (7-15 panels) |
| PC-NET-005-SCU | Smart Cube Unit |
| PC-NET-005-L1R-L2R | Dongle Upgrade L1R to L2R |
| PC-NET-005-L2R-L3R | Dongle Upgrade L2R to L3R |
| PC-NET-005-L2R-L2P | Dongle Upgrade L2R to L2P |
| PC-NET-005-L2P-L3P | Dongle Upgrade L2P to L3P |
| PC-NET-005-L3R-L3P | Dongle Upgrade L3R to L3P |

MxPro⁵ Parts list

| Product Code | Description |
|---------------|---|
| Cables | |
| UP-001 | FS232 9-Way to 3-Way Plug-In Connector – upload/download lead |
| UP-006 | USB Upload/Download Lead for Config Software |
| UP-015 | USB Lead (2M A-B Type) |
| UP-017 | Serial to Ethernet Interface (Moxa) |

| Power Supplies | |
|-----------------------|---|
| MXP-549 | 1.5A 24V EN54-4 PSE & Charger – boxed (7Ah battery) |
| MXP-549-12V | 1.5A 12V EN54-4 PSE & Charger – boxed (7Ah battery) |
| MXP-650 | 3A 24V EN54-4 PSE & Charger – boxed (17Ah battery) |
| MXP-650/D | 3A 24V EN54-4 PSE & Charger – boxed (38Ah battery) |
| MXP-651 | 5A 24V EN54-4 PSE & Charger – boxed (17Ah battery) |
| MXP-651/D | 5A 24V EN54-4 PSE & Charger – boxed (38Ah battery) |

| Spare (Caged) PSUs | |
|---------------------------|---|
| MXS-049 | Spare 1.5A EN54-4 PSU & Battery Charger |
| MXS-650 | Spare 2.5A EN54-4 PSU & Battery Charger |
| MXS-651 | Spare 5.0A EN54-4 PSU & Battery Charger |

| Panel Kits and Spares | |
|------------------------------|-------------------------------------|
| MXS-011 | Spare Panel Door Key |
| MXS-013 | Spare Panel Lock and Key |
| MXS-505 | Spare Glazed Door key |
| MXS-518 | MX-5000 Control Panels Spares Kit |
| MXS-520 | MX-5000 Remote Terminals Spares Kit |
| MXS-521 | MX-5000 Battery Leads |
| MXS-519 | MX-5000R Rack Mount Spares Kit |
| MXS-522 | MX-5000R Battery Leads |
| MXS-5-FP-S | Spare Fascia Plate and Membrane |
| MXS-5-FP-ML | Spare Fascia Plate and Membrane |

| Spare Base Cards | |
|-------------------------|---|
| MXS-501-CP-S | Spare 5100 Basecard w Small Chassis – Apollo/Hochiki |
| MXS-501-CP-M | Spare 5100 Basecard w Med Chassis – Apollo/Hochiki |
| MXS-501-PCB | Spare 5100 1 Loop Basecard PCB – no loop cards (programmed) |
| MXS-501-PSU | Spare 5100 1 Loop Basecard – PSU only |
| MXS-502-CP | Spare 5200 Basecard w Med Chassis – Apollo/Hochiki |
| MXS-502-PCB | Spare 5200 1 Loop Basecard PCB – no loop cards (programmed) |
| MXS-502-PSU | Spare 5200 1 Loop Basecard – PSU only |
| MXS-503-CP | Spare 5400 Basecard w Lrg Chassis – Apollo/Hochiki |
| MXS-503-CP-E | Spare 5400 Basecard w Ext Chassis – Apollo/Hochiki |
| MXS-503-PCB | Spare 5400 1 Loop Basecard PCB – no loop cards (programmed) |
| MXS-503-PSU | Spare 5400 1 Loop Basecard – PSU only |
| MXS-504 | Spare Display card |
| MXS-506 | Spare MX-5010 Card only |
| MXS-506/FT | Spare MX-5010 Card only – fault-tolerant network |
| MXS-507 | Spare MX-5020 Card Only |
| MXS-507/FT | Spare MX-5020 Card Only – fault-tolerant network |
| MXS-508 | Spare MX-5030 Card Only |
| MXS-508/FT | Spare MX-5030 Card Only – fault-tolerant network |

| Product Code | Description |
|-------------------------------|-------------------------|
| Small Enclosure Spares | |
| MXM-501 | Semi-Flushing Bezel |
| MXM-522-BB | Spare Back Box |
| MXM-522-D1 | Spare Door |
| MXM-522-CP | Spare Chassis Mtg Plate |

| Medium Enclosure Spares | |
|--------------------------------|--|
| MXM-502 | Semi-Flushing Bezel – MX-5000 |
| MXM-508 | Glazed Door Kit – medium |
| MXM-508Z | Glazed Door Kit – medium (double aperture) |
| MXM-523-BB | Spare Back Box |
| MXM-523-D1 | Spare Door |
| MXM-523-D2 | Spare Door (c/w zone aperture) |
| MXM-523-CP | Spare Chassis Mounting Plate |

| Large/Deep Enclosure Spares | |
|------------------------------------|--|
| MXM-503 | Semi-Flushing Bezel – MX-5000 |
| MXM-507 | Glazed Door Kit – large/deep |
| MXM-507Z | Glazed Door Kit – large/deep (double aperture) |
| MXM-524-BB | Spare Back Box |
| MXM-525-BB | Spare Back Box – deep enclosure |
| MXM-524-D1 | Spare Door |
| MXM-524-D2 | Spare Door – c/w zone aperture |
| MXM-524-D3 | Spare Door – c/w 2 x switch apertures |
| MXM-524-D4 | Mimic Door with Single Aperture |
| MXM-524-D5 | Blank Door |
| MXM-524-CP | Spare Chassis Mounting Plate |

| Extended Enclosure Spares | |
|----------------------------------|---|
| MXM-536 | Semi-Flushing Bezel |
| MXM-538-D1 | Glazed Door Kit – extended (zone aperture) |
| MXM-538-D2 | Glazed Door Kit – extended (2 x glazed apertures) |
| MXM-538-D3 | Glazed Door Kit – extended (mimic aperture) |
| MXM-537-BB | Spare Back Box |
| MXM-537-D1 | Spare Door |
| MXM-537-D2 | Spare Panel Door with Mimic Aperture |
| MXM-537-BP | Blank Plate for Zone LED Aperture |

| Repeater Enclosure Spares | |
|----------------------------------|---|
| MXM-521 | Semi-Flushing Bezel – MX-5010 / 5020 |
| MXM-509 | Semi-Flushing Bezel – MX-5030 RCT – large |
| MXM-543-BB | Spare back-box – MX-5010 / 5020 |
| MXM-544-BB | Spare back-box – MX-5030 RCT – large |
| MXM-543-D1 | Spare panel cover – MX-5010 / 5020 |
| MXM-543-D2 | Spare panel cover + K/S app – MX-5010 / 5020 |
| MXM-544-D1 | Spare panel cover – MX-5030 RCT – large |
| MXM-544-D2 | Spare panel cover + K/S app – MX-5030 RCT – large |

| Product Code | Description |
|-------------------------------|--|
| Other Enclosure Spares | |
| MXM-516 | Battery (18Ah) / Utility Enclosure – medium |
| MXM-517 | Battery (18Ah) / Utility Enclosure – large |
| MXM-546 | Battery (45Ah) Enclosure – deep |
| MXM-518 | Utility Enclosure – deep |
| MXM-519 | Chassis mounting plate for Utility Enclosure (3 cards) |
| MXM-531 | Document Enclosure – medium |
| MXM-532 | Document Enclosure – large |
| MXM-533 | Modem/ESPA/BMS Interface Enclosure |
| MXM-504 | Termination Enclosure – medium |
| MXM-505 | Termination Enclosure – large |
| MXM-506 | Termination Enclosure – deep |
| MXM-530 | Cable Clamp |

| Small Enclosure Special Finishes | |
|---|---|
| MXM-501-SSB | Semi-Flushing Bezel – stainless steel brushed |
| MXM-522-D1-SSB* | Spare Door – stainless steel brushed |
| MXM-522-BB-SSB | Spare Back Box – for use with stainless steel door (MW334E) |

* Add F for fitted

| Medium Enclosure Special Finishes | |
|--|--|
| MXM-502-SSB | Semi-Flushing Bezel – stainless steel brushed |
| MXM-523-D1-SSB* | Spare Door. Stainless steel brushed |
| MXM-523-D2-SSB* | Spare Door (c/w Zone Aperture) – stainless steel brushed |
| MXM-523-BB-SSB | Spare Back box for use w stainless steel door (MW334E) |

* Add F for fitted

| Large/Deep Enclosure Special Finishes | |
|--|---|
| MXM-503-SSB | Semi-Flushing Bezel – stainless steel brushed |
| MXM-524-D1-SSB* | Spare Door – stainless steel brushed |
| MXM-524-D2-SSB* | Spare Door (c/w Zone Aperture) – stainless steel brushed |
| MXM-524-BB-SSB | Spare Back Box – for use with stainless steel door (MW334E) |

* Add F for fitted

| Repeater Enclosure Special Finishes | |
|--|---|
| MXM-521-SSB | Semi-Flushing Bezel – MX-5010/5020 (stainless steel brushed) |
| MXM-509-SSB | Semi-Flushing Bezel – MX-5030 Large RCT (stainless steel brushed) |
| MXM-543-D1-SSB | Panel Cover – MX-5010/5020 (stainless steel brushed) |
| MXM-543-D2-SSB | Panel Cover & Key Switch Aperture – MX-5010/5020 (stainless steel brushed) |
| MXM-544-D1-SSB | Panel Cover – MX-5030 Large RCT (stainless steel brushed) |
| MXM-544-D2-SSB | Panel Cover & Key Switch Aperture – MX-5030 large RCT (stainless steel brushed) |

| Product Code | Description |
|--------------------------|--|
| Rack Mount Panels | |
| MX-5401R | 1-4 Loop Fire Panel c/w 1 Loop Card – Apollo/Hochiki |
| MX-5401AR | 1-4 Loop Fire Panel c/w 1 Loop Card – Apollo Core Protocol |
| MX-5401VR | 1-4 Loop Fire Panel c/w 1 Loop Card – Argus |
| MX-5401NR | 1-4 Loop Fire Panel c/w 1 Loop card – Nittan |

| Rack Mount LED Indication | |
|----------------------------------|---|
| MXP-513R-050RD | 4U LED Card 50 Zone Fire (red) |
| MXP-513R-050RY | 4U LED Card 50 Zone Fire (red) + Fault (yellow) |
| MXP-513R-050YL | 4U LED Card 50 Zone Fault (yellow) |
| MXP-513R-100RD | 4U LED Card 100 Zone Fire (red) |
| MXP-513R-100RY | 4U LED Card 100 Zone Fire (red) + Fault (yellow) |
| MXP-513R-100YL | 4U LED Card 100 Zone Fault (yellow) |
| MXP-513R-200RY | 4U LED Card 200 Zone Fire (red) + Fault (yellow) |
| MXP-513R-050CRY | 4U LED Card 50 Zone Column Format – Fire (red) + Fault (yellow) |
| MXP-513R-050CRYG | 4U LED Card 50 Zone Column Format (30 x red/yellow and 20 x green/yellow) |

| Rack Mount Spares | |
|--------------------------|---|
| MXM-510-16U | IP55 19" Rack Mount Enclosure – 16U high |
| MXM-510-20U | IP55 19" Rack Mount Enclosure – 20U high |
| MXM-510-KL | CAM Key-Lock Kit for Outer Door |
| MXM-510-BS | Battery Shelf |
| MXM-510-BS1 | Battery Shelf Lower |
| MXM-510-CP | Chassis Plate |
| MXM-511-1U | Blanking Plate – 1U |
| MXM-511-2U | Blanking Plate – 2U |
| MXM-511-3U | Blanking Plate – 3U |
| MXM-511-4U | Blanking Plate – 4U |
| MXM-511-5U | Blanking Plate – 5U |
| MXM-511-6U | Blanking Plate – 6U |
| MXM-511-7U | Blanking Plate – 7U |
| MXM-511-8U | Blanking Plate – 8U |
| MXM-511-9U | Blanking Plate – 9U |
| MXM-511-1U-TOP | Blanking Plate – 1U-TOP |
| MXM-512 | Blanking LED Plate – 4U |
| MXM-513-BB | 6U Back Box |
| MXM-515-6U | 6U Chassis Plate |
| MXM-513-D1 | 6U Door D1 Blank |
| MXM-513-D2 | 6U Door D2 LED |
| MXM-513-D3 | 6U Door D1 c/w Aperture |
| MXM-513-BP | 6U Switch/LED Blank Plate |
| MXM-513-MF | 6U Switch/LED Mounting Frame |
| MXM-513-FP | 6U Fascia Plate Blank |
| MXM-514-BB | 8U Back Box |
| MXM-515-8U | 8U Chassis Plate |
| MXM-514-D1 | 8U Door D1 c/w Aperture |
| MXM-514-FP | 8U Fascia Plate Blank |
| MXM-535-D1 | 13U Hinged Door – for 9 x MXP-538 or blank plates |



Email: enquiries@advancedco.com
Web: www.advancedco.com



MxPro 5 and all other Advanced product brands are trademarks of Advanced Electronics Ltd. All rights reserved



A **Halma** company