



# Axis<sup>EN</sup>

Next-generation EN54 fire system.  
More power. Maximum peace of mind.



# Contents

About Advanced	4
Next-Generation Axis EN	6
Next-Generation Basecard	8
Axis EN Features	10
Axis EN Fire Panels	13
Axis EN System Diagram	16
AxisGo – The New Single-Loop Fire Panel	18
High-Performance Detection	20
Axis EN Wired Devices	22
Axis EN Wireless Devices	26
AlarmCalm – Complete False Alarm Management	29
TouchControl – Remote Control Terminal and Repeater	30
Advanced Networking	31
Fire System Software	32
Custom-Built Panels	35
Axis EN Parts List	36

# AxisGo

The powerful, flexible, single-loop fire panel

Designed to be fast to fit, quick to configure and easy to use, AxisGo saves install time whilst bringing you complete peace of mind that your single-panel site has the highest levels of fire protection.

Offering cost-effective access to popular premium features from our Axis EN range in a simpler, non-networkable format, AxisGo provides powerful protection for a wide range of smaller sites.

Packed with future-proof technology and flexible features – including false alarm management, built-in zonal LEDs and a handy service tool – AxisGo can be used on wired, wireless or hybrid systems and is ready to become your Go-to!

Creating a safer future



# Advanced – Made in the UK. Trusted around the world

At Advanced, we're committed to creating a safer future. We deliver fire protection and life safety solutions that protect people and property in more than 80 countries across the globe.

Our products are shaped by decades of research and development expertise as well as ongoing investment in new technologies. This ensures they provide years of high performance and reliability – for ultimate peace of mind.

Everything we deliver is rigorously tested and approved to exacting quality standards – which is why Advanced products are trusted by customers the world over and synonymous with quality, performance and ease of use.



Advanced Headquarters, Newcastle, UK

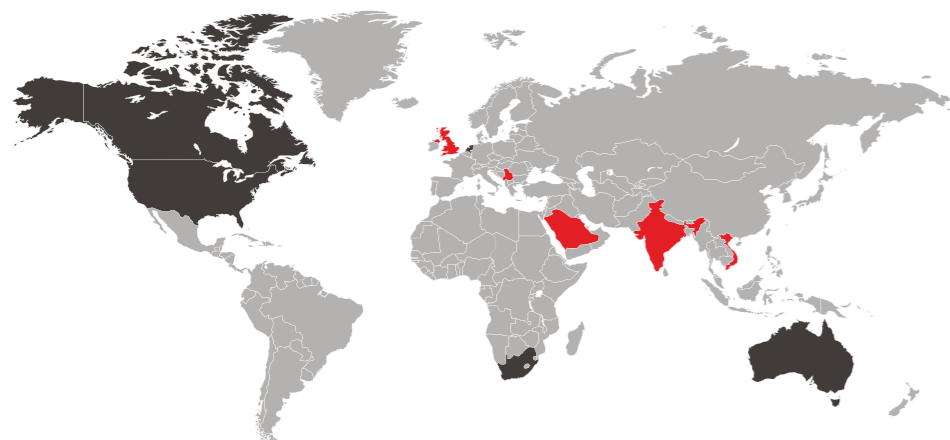
We understand that few fire protection challenges are the same, so as well as our mass-customised ranges, we also offer fully-customised solutions. This flexibility gives you complete control over the functions, format and finish of products to suit your site's unique specification.

We are dedicated to providing excellent service and have an international network of offices and agents to help you access sales support with ease – wherever you are in the world.



In addition, our training and technical services are free of charge to all our direct customers and consistently rated as excellent.

For added reassurance, Advanced is part of the safety sector of FTSE 100 company Halma plc. This global group of life-saving technology companies has a clear purpose to grow a safer, cleaner, healthier future for everyone, every day.



- Advanced & Halma sales representatives
- Strategic and OEM partners
- Distributors and system integrators in key locations worldwide



Landmark Tower, Dubai, UAE



Petronas Refinery, Kuala Lumpur, Malaysia

## Axis<sup>EN</sup> protects...



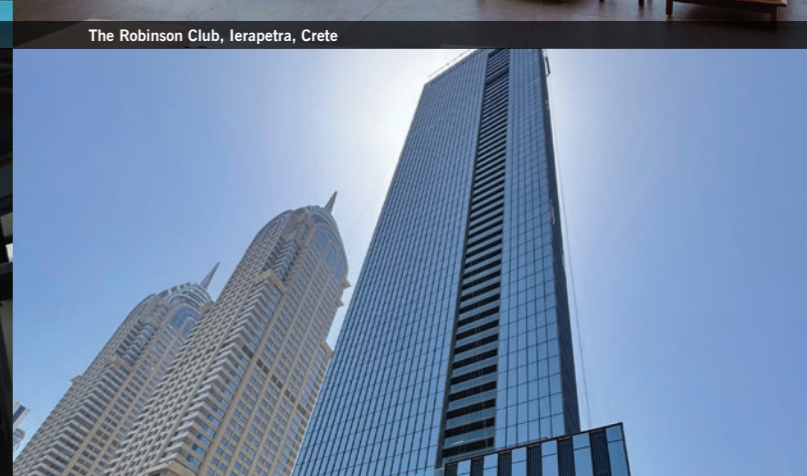
The Harbourview, Hong Kong, China



The Robinson Club, Ierapetra, Crete



Kinderherzen Mobile Children's Heart Hospital, El Salvador



Sobha S Tower, Dubai, UAE



Dubai Hills Estate Business Park, Dubai, UAE



Communications Regulation Commission office, Sofia, Bulgaria

# The next-generation Axis<sup>EN</sup>

**For over a decade, Axis EN has been reliably delivering fire safety peace of mind in buildings across the world.**

And while the panels' looks and dependability haven't altered, the technology and software driving them is constantly evolving – keeping them – and you – one step ahead in a fast-changing fire industry.

The Axis EN fire system you know and trust now features our simplest ever programming and our fastest

processing power to date. It's even more sustainable too, and the 4-loop variant has achieved an Environmental Product Declaration (EPD).

Here, you can discover all the benefits of our latest panels and learn why choosing Advanced puts you at the forefront of fire safety...



Our Axis EN 4-loop panel has achieved an Environmental Product Declaration (EPD).



Axis EN fire panels have been certified by FM Approvals, enabling them to carry the FM APPROVED diamond, one of the most prestigious certification marks in the world.

# Our most versatile panel

Axis EN brings you a sustainable upgrade option for existing systems, and a host of other new benefits.



## Upgraded processor and memory

Fast performance of power-up, configuration download, system monitoring and notifications.



## New loop-driver card

Our MXP-568 loop driver card enables a wide range of features and support for the latest devices.



## Enhanced power supply unit

Easy replacement, support for third-party equipment and long battery life.



## Quick, Intuitive intuitive programming

Our ConfigTool provides easy support for complex cause and effect programming, a design checker, and fast transfer of configuration settings (typically under 30 seconds).



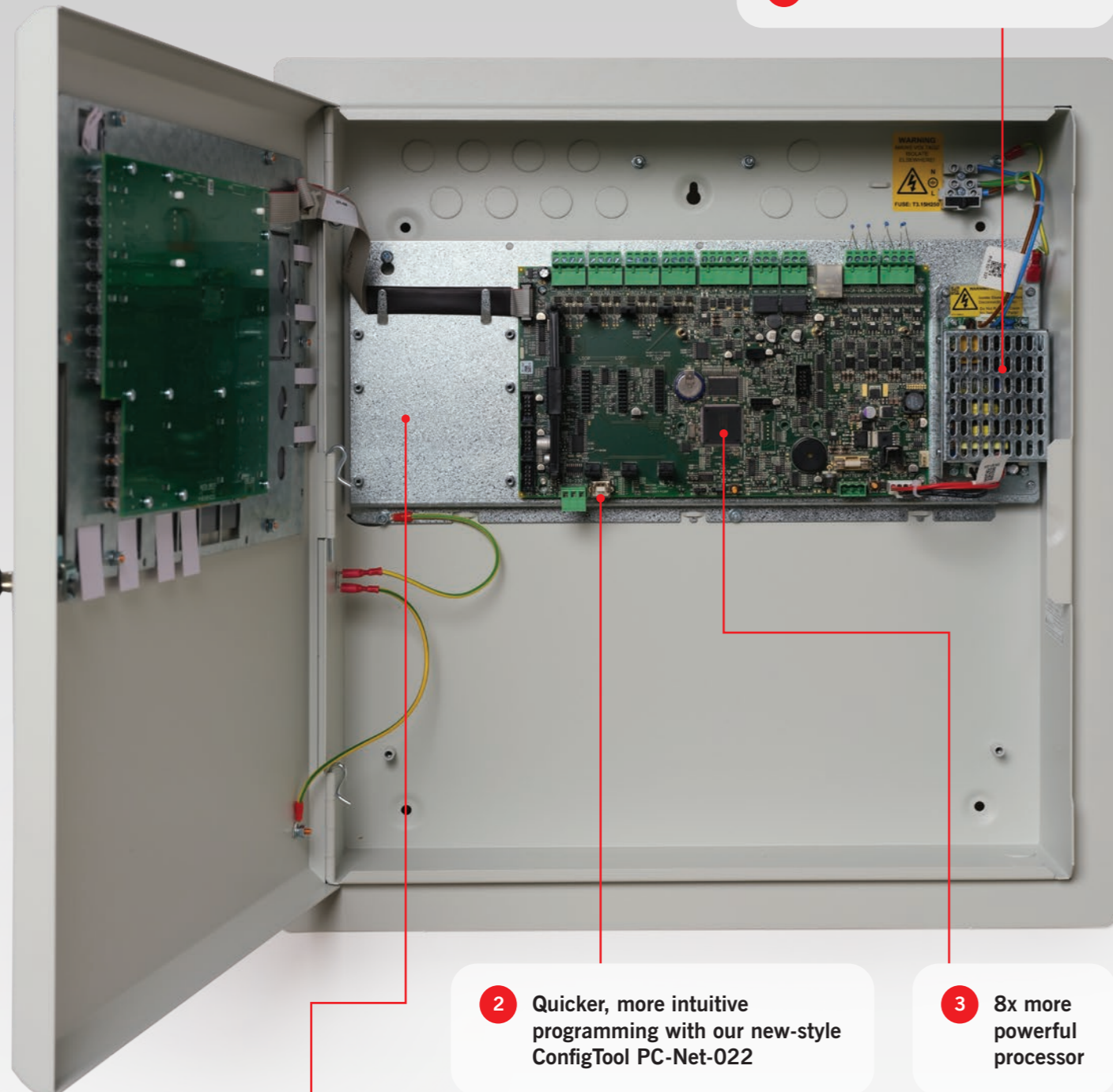
## Increased configuration options

Support for more complex cause and effect programming with increased point configuration and enhanced logic, using the latest Windows technology.



# Our best basecard yet

1 Improved power supply unit



2 Quicker, more intuitive programming with our new-style ConfigTool PC-Net-022

3 8x more powerful processor

4 Chassis for simple and easy upgrade and replacement

- Basecard mounted on chassis plate for easy removal/retrofit
- Allows more sustainable, cost-effective upgrade of existing Axis EN panels to next-generation model

The updated basecards for our 1-loop, 2-loop, 4-loop and 8-loop Axis EN panels provide a host of benefits, including intuitive commissioning, efficient battery performance and a smooth user experience.

## Basecard comparison:

Feature	Gen-1 basecard	Gen-2 basecard
1 <b>Power supply unit:</b>	Integrated into basecard	Upgraded and separate from basecard for easier replacement and integration with third-party equipment
<b>Menu navigation:</b>	Limited menu navigation responsiveness	Intuitive menu navigation support quick and easy installation and commissioning
2 <b>Configuration software:</b>	Not forward compatible with next-generation basecard. Uses PC-Net-003 configuration software	PC-Net-022 featuring user-friendly interface and navigation, including improved cause and effect and backwards compatibility
<b>Download time:</b>	Panel/PC average download time of 4 minutes	Connection to PC is much faster – less than 30 seconds
3 <b>Memory:</b>	Memory size limited to 512KB x 8	1MB x 8 providing improved capabilities and functionality especially on larger fire systems
<b>Number of points:</b>	1000	2000
<b>Input events:</b>	250	2000
<b>Logic terms:</b>		2000
<b>Logic statements:</b>	100	250
<b>Logic lines:</b>		3000
<b>Output group lines:</b>	1150	2000
4 <b>Chassis for simple and easy upgrade and replacement:</b>	Basecard mounted on chassis plate for easy removal/retrofit	Easy replacement of the basecard allows more sustainable, cost-effective upgrade of Gen-1 Axis EN panels to Gen-2.

# More power. Maximum peace of mind.

## Axis<sup>EN</sup>

- is our complete solution for customers demanding a versatile, high-performance fire system that's fully approved to EN54 Parts 2 and 4
- combines addressable panels with a versatile and comprehensive range of wired and wireless devices to bring you performance, quality and ease of use
- includes intuitive programming, powerful networking, comprehensive cause and effect and unique diagnostic features that put you in complete control of your fire protection and provide that all-important peace of mind
- is designed to go anywhere you need high quality, reliable and easy-to-use fire detection and control, from mass transportation and industrial complexes to landmark developments, historic buildings and public services
- offers a reliable, scalable solution, backed up by lifetime technical support.



Axis EN fire panels have been certified by FM Approvals, enabling them to carry the FM APPROVED diamond, one of the most prestigious certification marks in the world.



### Easy to install and use

Axis EN is built on Advanced's outstanding pedigree of fire alarm and detection experience. Research and development involved installers, specifiers, consultants and end users across the world, to bring you a range of EN54-approved fire panels that are simple to install, configure and use.

- Easy-fix removable chassis and in-built software make Axis EN fire panels quick and easy to set up
- Powerful networking, extensive configuration options and comprehensive cause and effect put you in complete control
- Intuitive controls and menus, with simple click-and-select programming, for simple and easy commissioning
- Support for intelligent remote terminals, I/O drivers and BMS interfaces make light work of connecting with building management systems
- Our highly rated technical support team can help with advice, tips and training. We also have an extensive collection of 'how to' videos on our YouTube channel.

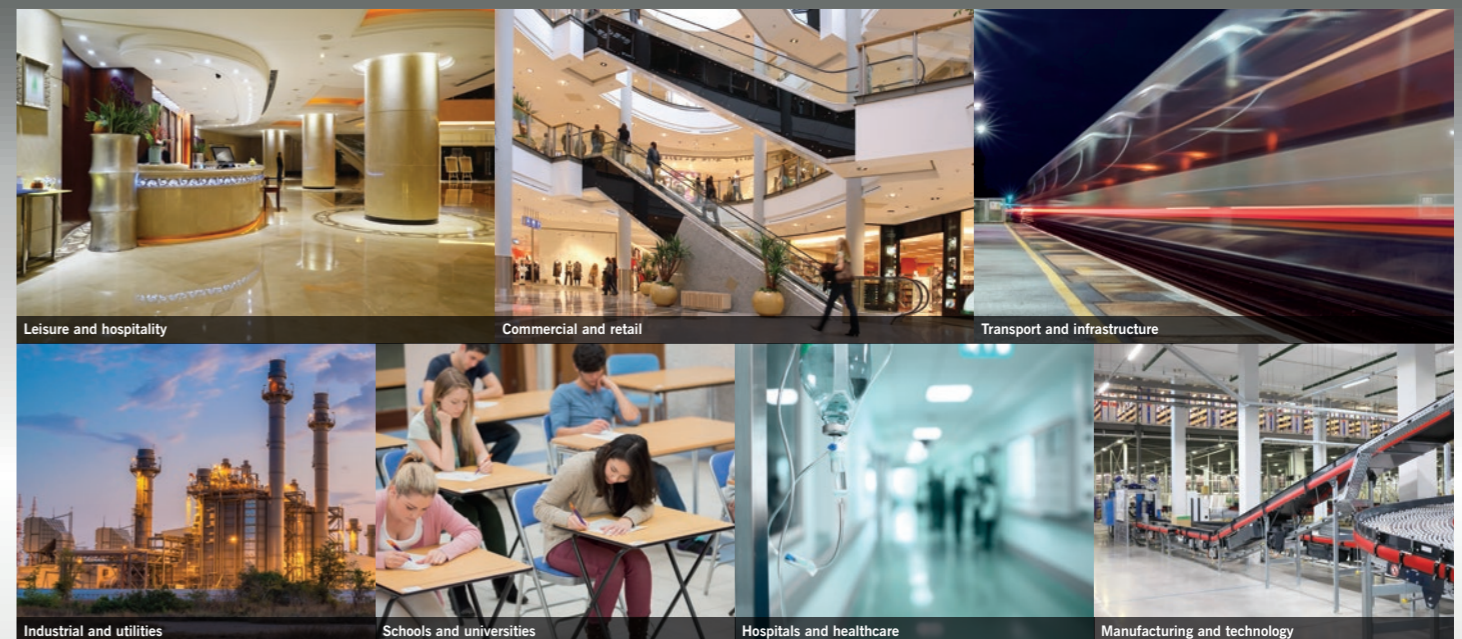


### Scalable and flexible

We know that sites can expand, and fire protection requirements evolve over time.

That's why we've designed Axis EN to be scalable and flexible, able to adapt as required with minimal fuss or disruption.

- Standalone one, two, four or eight loop formats so you can choose the panel size that meets your requirements and budget
- Remote display terminals available including TouchControl – our 10"/25.4cm touchscreen with interactive maps and zone plans for use in public reception areas
- Up to 240 devices per loop and an overall capacity of 200,000 devices per network
- Every panel is networkable with up to 200 network nodes and 2,000 fire detection zones
- Versatile, thanks to a comprehensive wired and wireless detector range so you can build a system that meets your current and future needs.





## Packed with premium features

Every Axis EN panel comes with a host of advanced features built in as standard, giving you peace of mind that you won't need to buy expensive add-ons in the future.

- Unique diagnostic features include 'scope on board' to provide readings on the panel from any loop, making it easy to identify and investigate any issues
- Network diagnostic tool prevents fires and faults from being transmitted across the network
- Built-in multimeter measures all voltages and currents across the system, so you can speed up the commissioning process by identifying voltage/current levels in real time
- Every panel includes AlarmCalm false alarm management software to help you minimise unwanted alarms, with 200 programmable false alarm management areas per panel
- Ability to monitor the circuit from any panel or remote terminal and see a complete device history on every panel
- Standard peripherals include direct USB and RS232 PC connections, and peripheral expansion is built in for added peace of mind
- Modular in construction, with mass customisation options including the ability to program your own company logo to appear on the fire panel screen
- 20 built-in, fully programmable LEDs as standard without the need to buy a separate LED zone card
- On-board or optional remote battery temperature sensor ensures optimum operational efficiency and life
- 4 programmable push buttons on the front of the panel for user customisation according to your fire system's needs
- 5,000 event and diagnostic, and 500 fire event log entries, for comprehensive tracking and auditing
- Timed enablement of disabled zones, input and output devices, to program and manage fire system response and reporting.



## Powerful, flexible service reporting

Every Axis EN panel includes an inbuilt, easy-to-use, Windows-based service tool which saves you time and money by providing easy, instant access to historic and real-time device data, and shows proof of servicing at a glance.

- Demonstrate proof of servicing, download service reports, inspect the device history and keep track of service schedules
- Customisable data filters make it easy to focus on potential trouble spots and ensure they're checked and tested during servicing
- Predict which devices are becoming contaminated so you can clean/replace them before they cause a false alarm
- Customise reports to show the data you need and export it as PDF, Excel or HTML files makes it easy to prove compliance.

## Fire panels

### Axis EN: 1 Loop



- Single loop
- Small enclosure
- Maximum 7Ah internal batteries
- 20 programmable LEDs
- Optional programmable key switch
- Up to 8 programmable key switches or 4 plus printer
- Medium, large and deep enclosure options
- Product code: Axis-5101

### Axis EN: 1-2 Loop



- Order an extra loop driver card for a 2-loop panel
- Medium enclosure
- Maximum 12Ah internal batteries
- Up to 50 additional programmable LEDs
- Up to 8 programmable key switches or 4 plus printer
- Plexi-glass door option
- Large and deep enclosure options
- Product code: Axis-5201

### Axis EN: 1-4 Loop



- Order an extra loop driver card for a 2-loop panel, 2 cards for a 3-loop panel and 3 for a 4-loop panel
- Large enclosure
- Standard enclosure supports max 17Ah internal batteries. Deep enclosure option supports max 45Ah
- Up to 200 additional programmable LEDs
- Up to 8 programmable key switches or 4 plus printer
- Plexi-glass door option
- Rack mount option available
- Environmental Product Declaration achieved for the 4-loop panel
- Product code: Axis-5401



MxPro 5 & Axis EN 4-Loop  
000766

### Axis EN: 2-8 Loop



- Order an extra loop driver card for a 2-loop panel, 2 for a 3-loop panel, 3 for a 4-loop panel etc
- Extended enclosure
- Maximum 45Ah internal batteries
- Up to 200 additional programmable LEDs, 2 x switch cards or mimic
- Up to 8 programmable key switches or 4 plus printer
- Plexi-glass door and external battery box option
- Product code: Axis-5802

### Axis EN: Integrated Peripheral Bus

- Integrated P-Bus as standard
- Up to 32 expansion cards can be added to an Axis EN panel
- Peripheral expansion option cards include:
  - 4-way relay card
  - 4-way sounder card
  - 10-way monitored input card
  - 8-way relay card
  - ESPA card
  - Conventional zone card (8 class B or 4 class A zones + 3 programmable relays)
  - 16-way push button / 48 LED card
  - 16-way input / 48 output (direct drive LED outputs)
  - Fire and fault routing / protection card
  - Redundant controller
  - Smoke control interface

### Axis EN: Remote Terminals

- Four types available including;
  - TouchControl touchscreen with active maps
  - Remote display terminal
  - Remote control terminal with additional mute, silence, reset and resound keys
  - Remote control terminal with additional LED status indication, four programmable push buttons, mute, silence, reset, resound, lamp test and evacuate keys
- Optional level 2 access-enable key switch. (Not TouchControl)
- Integrated standard or fault-tolerant network interface with screen termination point
- Programmable display for up to 2,000 zones along with sector-based controls
- Product codes: MX-5010, MX-5020, MX-5030, MX-5010/FT, MX-5020/FT, MX-5030/FT TOUCH-10, TOUCH-10/FT

### Axis EN: Rack Mount

- Rack-mountable Axis-5401 control panel
- Additional 16U and 20U high IP55 enclosures
- Rack-mount peripheral chassis plate, LED and switch card module options
- Dedicated mimic door option
- Product code: Axis-5401R



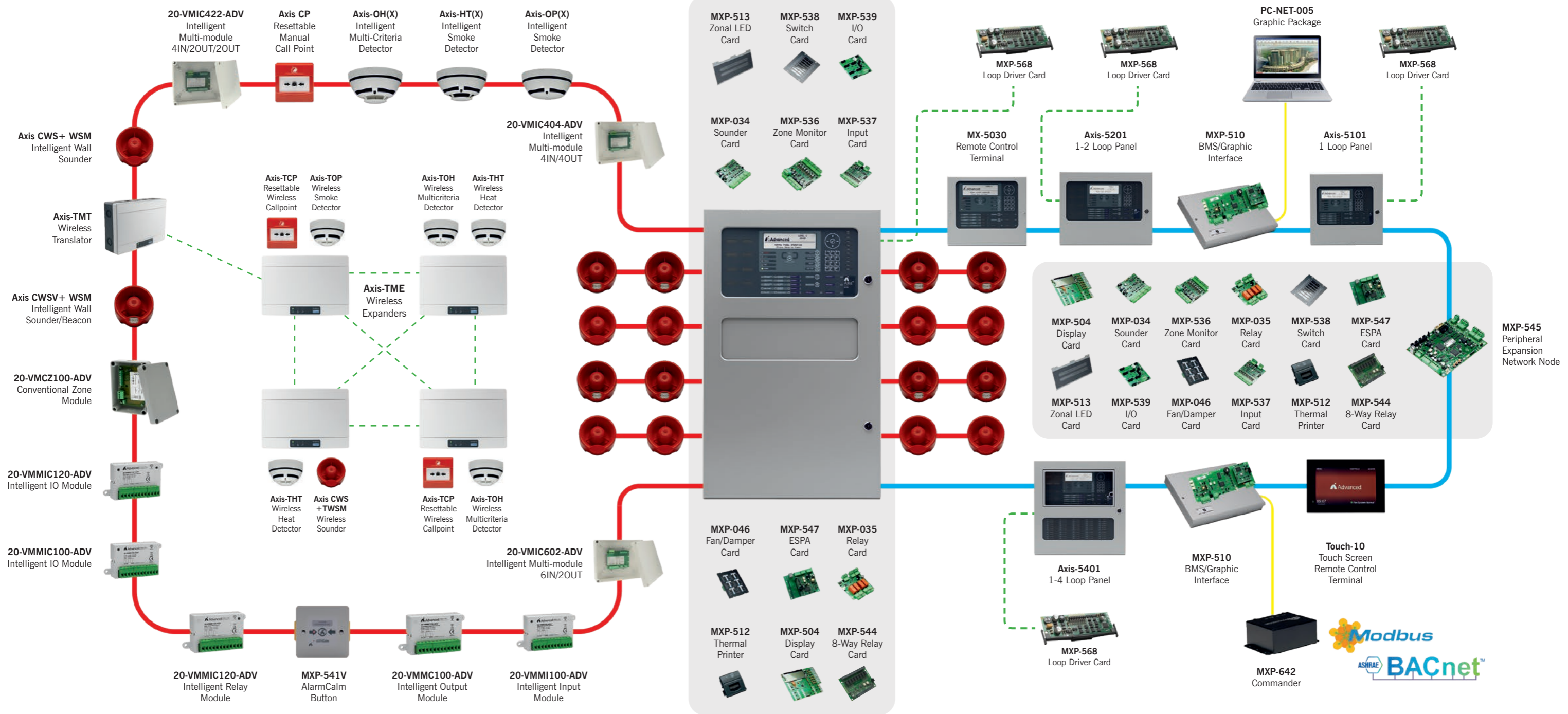
L to R = MX-5030, MX-5020, TOUCH-10

# Axis<sup>EN</sup> Features

Hardware Features	
<b>Display backlight</b>	White backlit display Improved efficiency with programmable dimming options Software-driven contrast adjustment via menu
<b>PC connections</b>	USB and RS232 – independently operated
<b>Peripheral expansion bus</b>	Built in as standard on all panels Extended range of P-Bus option cards
<b>Wiring fault monitoring</b>	EN54-2: Open circuit, short circuit EN54-13: Continuous checking for increases in resistance, (loose terminations), partial shorts etc.
<b>Control keys</b>	Mute, Silence, Reset, LED Test, Resound, Evacuate and dedicated More Alarms buttons on control panels and large repeater Configurable keypad repeat keys
<b>Front panel push buttons</b>	4 programmable function buttons on control panels and large repeater
<b>Battery charging</b>	Charger current (up to 2 amps), voltage and temperature available from any display on a network Built-in or remote battery temperature sensor
<b>Zone LEDs</b>	20 integral red LED indicators included as standard on control panels and large repeater Can be assigned to any fire zone or programmable for other uses Up to 200 additional LEDs with Large, Deep and Extended enclosures. (Up to 50 in Medium enclosure) Options include red, yellow and (bi-colour) red/yellow or green/yellow column format with slide-in labels
<b>Programmable input</b>	Dedicated monitored switch input as standard on all panels
<b>Programmable key switch inputs</b>	Built-in as standard on all panels
<b>Printer</b>	Optional on-board printer. No additional battery pack required. Integral paper feed button. Printer fault conditions displayed on panel, prints customer logo
<b>Power</b>	Aux supply output @ 500mA 24V
<b>Standards</b>	Approved to EN54 Parts 2 and 4
Software Features	
<b>Independent general event and fire event logs</b>	Yes – on all panels and repeaters Any panel can be configured as a network-wide main event log
<b>Event log entries</b>	5,000 + 500 fire Additional logging for investigation delays and any enable/disable actions
<b>Timed disable options</b>	Permanent or automatic timed re-enablement of any input or output device
<b>Enable/disable inputs by zone</b>	<ul style="list-style-type: none"> <li>• All inputs</li> <li>• Selected inputs</li> <li>• Only automatic inputs</li> <li>• Only manual inputs</li> <li>• All other inputs</li> </ul>
<b>Enable/disable outputs</b>	Disable by output purpose Configurable disable outputs menu options include: sounders, relays, beacons, fire routing, fault routing, fire protection, pager, all or selected Disablement of outputs across network configurable by sector mask
<b>Real-time clock</b>	Yes - no lithium battery required
<b>Languages</b>	Supports multiple different character sets (code pages) and languages

Network Features	
<b>Max devices per network</b>	200,000
<b>Max nodes on network</b>	200
<b>Sectors</b>	200
<b>Maximum fire zones displayed</b>	2,000 on all panels
Programming Features	
<b>Independent building areas for false alarm management</b>	201 areas per panel Local or global alarm acknowledgement facility
<b>Zone LEDs</b>	All LEDs fully programmable PC configuration presented graphically Primary/secondary activation
<b>Buzzer options</b>	Smart latch of faults Fault notification can resound daily Service option to inhibit by time clock
<b>Programmable input actions</b>	22 – including new supervisory, fire routing and fire protection confirmed + alarm acknowledgement actions
<b>Output purpose</b>	Output purpose configurable
<b>Output ringing styles</b>	40 – output activation priority configurable
<b>Zone qualifiers</b>	24 categories of zone qualifiers
<b>Logic statements</b>	3,000 logic lines – programmable options: <ul style="list-style-type: none"> <li>• Inputs</li> <li>• Any 2 inputs</li> <li>• Zone qualifiers</li> <li>• Any 2 zones</li> <li>• General events</li> <li>• Time clocks</li> </ul>
<b>General events</b>	36 categories
<b>Blocking rules</b>	Programmable blocking rules – by general event or output groups
Service and Diagnostic Features	
<b>Device history</b>	For every device the time and date of the: <ul style="list-style-type: none"> <li>• Last activation</li> <li>• Last test</li> <li>• Last disable</li> <li>• Last enable</li> <li>• Date created</li> </ul>
<b>On-board digital storage scope</b>	Yes
<b>View panel voltages and currents</b>	Available from any MxPro 5 repeater or panel on the network
<b>View panel status</b>	View status of all panel circuits across network Firmware version of all internal hardware and peripheral devices can be viewed at the panel
<b>Firmware updates</b>	All hardware flash upgradable via panel USB or serial port
<b>Detector status information</b>	New warning state allows any devices nearing drift contamination limits to be identified during routine servicing before a fault level is reached
<b>ServiceTool</b>	Download device information Extract event log information Download device history View drift (contaminated) status of detectors Network simulation and test facility

# Axis<sup>EN</sup> System Diagram



# The Single-Loop Fire Panel

## AxisGo

- is the single-loop fire panel from Advanced.
- brings you easy, cost-effective access to popular premium features from our Axis EN range in a simpler, non-networkable format.
- is the ideal solution for all your small to medium-sized sites where networking's not needed, but quality, performance and ease of use are.



**Standalone fire protection for complete peace of mind**

**Please note:** AxisGo is currently available in a selection of countries where EN54 Standards apply. For full details, please speak to your sales representative.



**Easy to install and use**

Time is money, so we've built in a host of features that make AxisGo a breeze to install, configure and use.

- An easy-fit chassis and unique door design ensure installation is fast and fuss free
- Familiar controls and menus mean there's no lengthy learning curve
- A new, intuitive ConfigTool makes setup quicker and easier than ever
- A powerful design checker allows you to prove your system will work without visiting site
- If you do need support, our highly rated technical services team's got your back with advice, tips and training.



**Fast and efficient**

AxisGo is designed with speed and efficiency in mind.

- Built-in peripherals including USB and ethernet ports
- Latest microcontroller technology ensures high-speed operation.



**Feature-rich and flexible**

We understand that small sites aren't always simple, so we've packed AxisGo with flexibility to give you the best of all worlds.

- A wide range of cause-and-effect programming to suit your site
- Comprehensive false alarm management and reduction options to minimise unwanted alarms
- Enhanced diagnostics for fewer faults, faster fixes and better performance
- Optional expansion module for fire and fault routing equipment
- 15 zonal LEDs as standard without the need to buy a separate LED zone card
- Our range of versatile Axis EN devices gives you complete freedom to quickly and easily design the perfect wired and wireless solutions for your site
- A choice of two panel address sizes so you only buy the capacity you need.



**Ready for you now... and for the future**

We understand that fire protection solutions need longevity.

- AxisGo's state-of-the-art technology ensures high performance today – and for years to come.

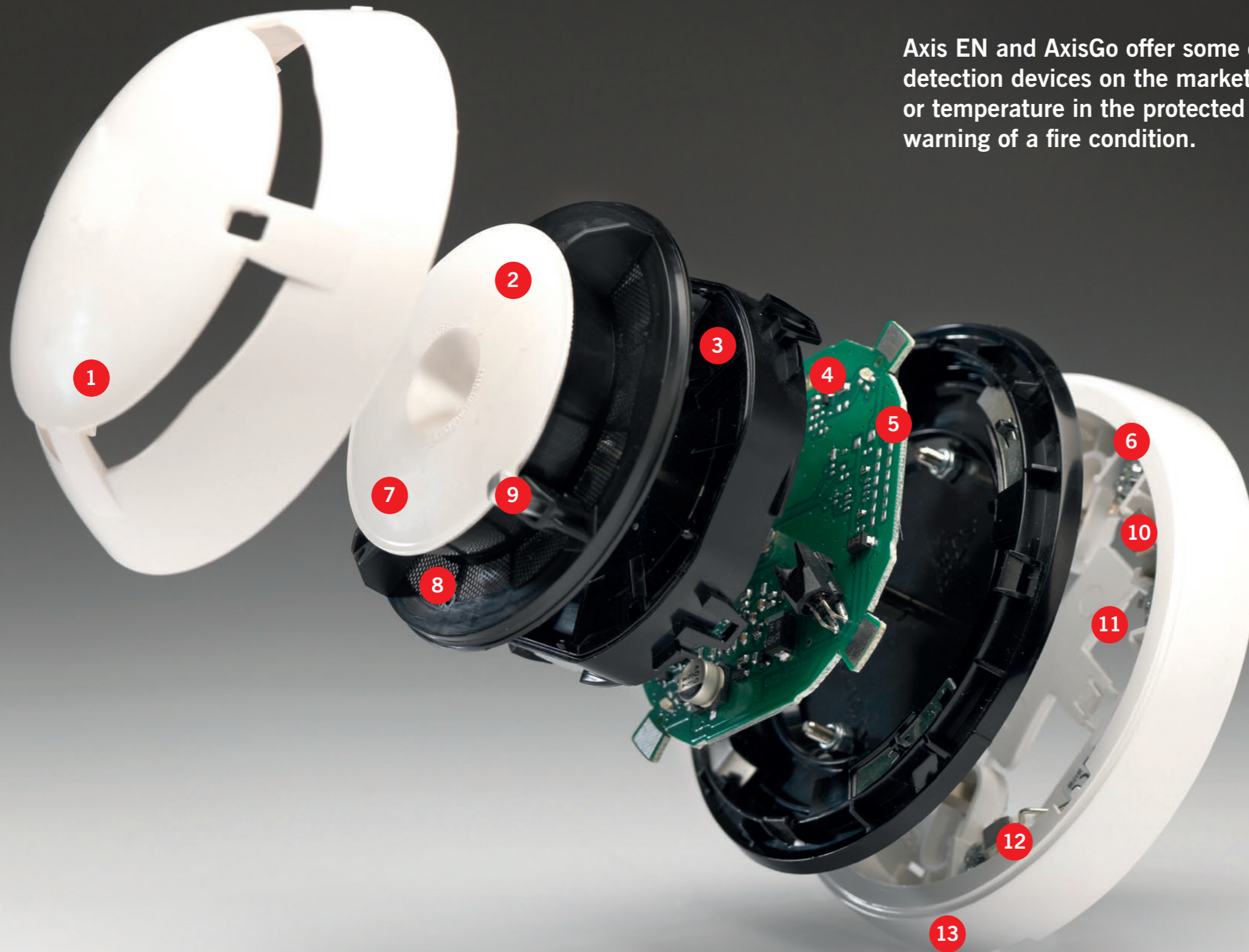
## AxisGo parts list and order codes

AxisGo		
AxisGo1	AxisGo1 - 1-Loop Fire Alarm Panel – Grey	50 addresses
AxisGo+		
AxisGo1+	AxisGo1+ - 1-Loop Fire Alarm Panel – Grey	240 addresses
Options		
GOP-001	AxisGo PBUS Adaptor Card	
GOP-002	AxisGo Access Enable Key-Switch	
MXP-532	AxisGo Routing/Protection Interface	
MXP-506	AxisGo Routing Termination Card	

# High-Performance Detection

Axis<sup>EN</sup> AxisGo

Axis EN and AxisGo offer some of the best-performing wired and wireless detection devices on the market. By continuously sampling air and/or temperature in the protected area, these devices provide the earliest warning of a fire condition.



- 1 Unique **low-profile** device design suitable for any location.
- 2 **White disk** indicates **multicriteria detector**. **Black** indicates **heat detector**. Allows easy identification of device type from the floor.
- 3 Angled, dust-restrict chamber with unique reverse sedimentation design offers almost total **immunity to airborne contaminants and insects**.
- 4 **High-performance sensors** continuously monitor the environment to provide the earliest warning of a fire condition.
- 5 Intelligent algorithms deliver a **high degree of false alarm rejection**.
- 6 **Locking tab** prevents unauthorised removal of the device from the base.
- 7 Removable chamber cap for **easy cleaning**.
- 8 Fine, honeycomb mesh screens out dust, fibres and insects, whilst ensuring **maximum airflow for optimum detection** of genuine fires including low-energy and low-airflow fires.
- 9 Dual bi-colour LEDs offer clear **360° visibility**.
- 10 **Remote output** available to drive anything up to **17 mA**.
- 11 Handheld addressing with optional **address tabs** included in the base.
- 12 **Short-circuit spring** enables easy checking of loop continuity.
- 13 Detector base designed for **easy installation**.

## Outstanding Devices

The Axis EN wired and wireless loop device range offers high performance, easy installation and maintenance, and a range of superior features and benefits suitable for almost any configuration.

- Axis EN devices can only be used on our systems (Axis EN and AxisGo), guaranteeing performance and reliability.
- Our device feature set delivers the very best performance across a vast range of applications and configurations, both as an individual sensor and when used in conjunction with our fire alarm logic.
- Intelligent algorithms in each sensor, unique chamber designs, airflow and dust filtration systems ensure a high degree of accuracy, sensitivity and false alarm rejection, which can then be augmented in our AlarmCalm software to provide the most complete solution to false alarms on the market.
- All devices are ultra-low current, allowing up to 240 devices per loop.
- A complete range of wired and wireless modules means there is a huge variety of configuration options from the loop.
- Ease of installation has been maximised with open mounting bases offering easy wiring and stability across a wide range of surface finishes, with a low-pressure, secure locking mechanism.
- Addressing and sensitivity settings can be set using a hand-held digital programmer or via auto addressing in the fire control panel.
- Alongside a range of unique service and maintenance features offered by Axis EN, the detectors have a magnet test capability.
- All detectors are available with and without bi-directional isolators to meet a range of performance and price points.
- Dual bi-colour LEDs (or single colour in the non-isolated variants) provide a 360° cone of visibility.
- All detectors have undergone comprehensive testing by EN and Duisberg Fire and Nuisance Tests.
- Approved to EN54.

## Wired Range

### Detectors and Mounting Base

#### Intelligent Optical Smoke Detector



- Continuously monitors the air in the protected area to provide the earliest warning of a fire condition
- Available with and without isolator
- With isolator approved to EN54-7 and EN54-17. Without isolator approved to EN54-7
- Product codes:
  - Intelligent Optical Smoke Detector with Isolator: Axis-OPX
  - Intelligent Optical Smoke Detector (no Isolator): Axis-OP

#### Intelligent Multicriteria Detector



- Continuously samples both the air and the temperature variation in the protected area to provide the earliest warning of a fire condition
- Available with and without isolator
- With isolator approved to EN54-5, EN54-7 and EN54-17. Without isolator approved to EN54-5 and EN54-7
- Nine modes of operation
- Product codes:
  - Intelligent Multicriteria Detector with Isolator: Axis-OHX
  - Intelligent Multicriteria Detector (no Isolator): Axis-OH

#### Intelligent Heat Detector



- Continuously samples for temperature variation in the protected area to provide the earliest warning of a fire condition in places where traditional smoke detection products are not suitable
- Two thermal sensitivity levels: Rate of Rise (A1R) and Class BS
- Available with and without isolator
- With isolator approved to EN54-5 and EN54-17. Without isolator approved to EN54-5
- Product codes:
  - Intelligent Heat Detector with Isolator: Axis-HTX
  - Intelligent Heat Detector (no Isolator): Axis-HT

#### Axis Mounting Base



- High reliability
- Device-locking capability
- Easy central cable entry
- Integral device identification tab
- Remote indicator connections
- Built-in continuity spring
- Product code: Axis-MB

## Wired Range

### Modules



#### Single Input

- Input monitored for normal, short, alarm and open conditions
- Available in wall-mount and mini formats
- Auto or manual addressing
- Bi-directional short-circuit isolators
- Red/green panel driven LED
- Plug-in connections
- Product codes: 20-VM100-ADV (wall-mount) 20-VMM100-ADV (mini)



#### Single Supervised Output

- Output monitored for open and short circuits
- Available in wall-mount and mini formats
- Auto or manual addressing
- Bi-directional short-circuit isolators
- Red/green panel driven LED
- Plug-in connections
- Product codes: 20-VMC100-ADV (wall-mount) 20-VMMC100-ADV (mini)



#### Loop-Powered Multi Modules

- Microprocessor-controlled interface devices permitting the monitoring and control of auxiliary equipment
- Each input/output individually programmable
- Optional fail-safe setup
- Loop driven
- Each module takes up to 8 addresses
- IP65-rated enclosure
- Product codes:
  - 20-VMIC404-ADV (4 single-channel monitored input contacts and 4 volt-free 'form C' changeover contacts)
  - 20-VMIC422-ADV (4 single-channel monitored input contacts, 2 supervised output contacts and 2 volt-free 'form C' changeover contacts)
  - 20-VMIC602-ADV (6 single-channel monitored input contacts and 2 volt-free 'form C' changeover contacts)



#### Single Input and Single Relay Output

- Input monitored for normal, short, alarm and open conditions
- Programmable Form C changeover contact for auxiliary device control
- Available in wall-mount and mini formats
- Auto or manual addressing
- Bi-directional short-circuit isolators
- Red/green panel driven LED
- Plug-in connections
- Product codes: 20-VMIC120-ADV (wall-mount) 20-VMMIC120-ADV (mini)



#### Single Input and Supervised Output

- Input monitored for normal, short, alarm and open conditions
- Output monitored for open and short circuits
- Available in wall-mount and mini format
- Auto or manual addressing
- Bi-directional short-circuit isolators
- Red/green panel driven LED
- Plug-in connections
- Product codes: 20-VMIC100-ADV (wall-mount) 20-VMMIC100-ADV (mini)



#### Single Relay Output

- Programmable Form C changeover contact for auxiliary device control
- Available in wall-mount and mini formats
- Auto or manual addressing
- Bi-directional short-circuit isolators
- Red/green panel driven LED
- Plug-in connections
- Product codes: 20-VMC120-ADV (wall-mount) 20-VMMC120-ADV (mini)



#### Conventional Zone Module

- Compatible with majority of well-known European conventional detectors
- External or loop powered
- Fully programmable and flexible
- Program via panel or handheld programmer
- Adjustable current limit by panel
- Identifies all conditions on conventional zone
- Auto or manual addressing
- Bi-directional short-circuit isolators
- Programmable Form C changeover relay included
- Product code: 20-VMCZ100-ADV

## Wired Range

### Sounders and Sounder Beacons



#### Intelligent Sounder Base

- 32 programmable tones
- Built-in loop isolators
- Fully intelligent
- Synchronised sounder
- Adjustable volume output
- Auto-addressable when detector head attached
- Programmable via the panel or device programming tool
- Includes device identification tab
- Product code: Axis-S2MB



#### Slave Sounder Base

- 32 selectable tones
- Low current, high output local sounder
- Tone and volume set via DIP switch
- Adjustable volume output
- Includes device identification tab
- Easy central cable entry
- Does not need any addressing
- Provides a lower cost alternative to the intelligent sounder base
- Product code: Axis-S2AMB



#### Intelligent Sounder Beacon Base (White or Red Flash)

- 32 programmable tones
- Built-in loop isolators
- Fully intelligent
- Adjustable volume output
- Auto-addressable when detector head attached
- Programmable via the panel or device programming tool
- Includes device identification tab
- Compatible with standard remote activation
- Synchronised sounder
- Easy installation and cabling
- Low-profile design
- 360° degree of visibility of VAD when activated
- Red flash is unique and useful for retrofits
- Product codes: Axis-SV2MB (white flash) Axis-SV2MBRF (red flash)



#### Slave Sounder Beacon Base (white flash)

- 32 selectable tones
- Low current, high output local sounder
- Visual output reinforces audible warning and has a fixed pattern and intensity
- Tone and volume set via DIP switch
- Adjustable volume output
- Includes device identification tab
- Does not require addressing
- Easy central cable entry
- Provides a lower cost alternative to the intelligent sounder beacon base
- Product code: Axis-SV2AMB

### Conventional



#### Wall Sounder

- Flexible modular design
- Approved for outdoor use to EN54-3 (type B)
- 32 tone settings
- Two-stage alarm capability
- Weatherproof to IP65
- High sound output capability
- 4 adjustable volume settings
- Must include Intelligent Sounder Interface Module Axis-WSM to be addressable
- Extremely low current
- Embedded microphone for self test
- Product code: Axis-CWS
- Also available in white
- Product code: Axis-CWS/W for white option
- To make this addressable, order with Axis-WSM
- Extremely easy to insert the Axis-WSM into the base of the Axis-CWS



#### Wall Sounder Beacon (VAD)

- Flexible modular design
- Approved for outdoor use to EN54-3 (type B) and EN54-23
- 32 tone settings
- Two-stage alarm capability
- Weatherproof to IP65
- High sound output capability
- Silent sounder setting for beacon-only use
- 4 adjustable volume settings
- Must include Intelligent Sounder Interface Module Axis-WSM
- Extremely low current
- Embedded microphone for self test
- Product code: Axis-CWSV
- Available in white
- Product code: Axis-CWSV/W
- To make this addressable, order with Axis-WSM
- Extremely easy to insert the Axis-WSM into the base of the Axis-CWS



#### Ceiling Beacon

- Ceiling mounted
- Low-power, high-output LED technology
- Coverage radius of 7.5m at ceiling height of 3m
- Flash rate of 0.5Hz (1 every 2 seconds)
- High-intensity white LED
- Anti-tamper lock
- Uses a standard detector base (Axis-MB)
- Approved to EN54-23
- Product code: 20-CBE1002



#### Intelligent Sounder Interface Module

- Designed to allow use of conventional wall sounder (Axis-CWS) and conventional wall sounder with VAD (Axis-CWSV) on an Axis EN intelligent loop
- Flexible modular design
- Easy to install
- Manual and auto addressing options
- Built-in short-circuit isolators
- Intelligent two-stage alarm capability
- Microphone self-test facility
- Fits Axis EN conventional wall sounders and sounder beacons, making them addressable and loop powered
- Product code: Axis-WSM

## Wired Range

### Accessories



#### Programming Unit

- Easy to use for all programmable variables from the device range including the loop address
- Clear device display
- Auto shut-off to save battery
- Displays the sensor analogue values
- Includes programming cables for backwards compatibility
- Product code: Axis-PU



#### Remote Indicator

- Low current consumption
- Output programmable by panel
- Product code: 20-FI100-ADV



#### Silicone Base Gasket

- Sits between device and ceiling to prevent moisture ingress
- Fits any detector (smoke, heat or multi) between the plastic base and the surface it is mounted on
- Product code: Axis-WP



#### Module Mounting Boxes

- Polycarbonate enclosures for modules
- Product codes: 20-MB100-ADV (86x86x30mm) 20-DMB100-ADV (86x86x52mm) 20-BMB100-BX (170x210x66mm)



#### Duct Detector Housing

- Easy to install duct detector housing
- Innovative single tube air sampling system
- Simple servicing and maintenance
- Compatible detectors - Axis-OPX and OP (smoke), Axis-OHX and OH (smoke & heat)
- Sampling tube available in 0.6m, 1.5m and 2.8m lengths
- Product codes: AXIS-DDH/OPX (c/w optical detector) 20-DDH-BRA-ADV (bracket) 20-DDH-ST0.6-ADV 20-DDH-ST1.5-ADV 20-DDH-ST2.8-ADV



#### Detector Base Housing

- For detector installations in difficult environments
- Diverts excess water and condensation away from the detector
- Product codes: 20-UA-BCW-H37 (shallow base) 20-UA-BCW-H65 (deep base)

### Call Points



#### Weatherproof Call Point Housing

- Easy and fast installation
- Breakseal to increase visible deterrent from misuse
- Spacers for surface and flush installations
- Reduces unwanted alarms
- Provides environmental and mechanical protection
- Simple retrofit to existing installations
- Suitable for all Axis EN call points
- Product codes: 20-WHCP-BBR (red back-box) 20-WHCP-BBC (clear back-box)



#### Resettable Manual Call Point

- EN54-11 and EN54-17 approved
- Glass appearance maintains operator deterrence
- Positive activation that mimics the feel of breaking glass
- Visible warning flag confirms activation
- Simple key to reset operating element - no broken glass
- No glass elements to break, lose or incorrectly fit during installation
- Complete functional test with every activation
- Available in red or yellow
- IP67 waterproof call point available
- Product codes: Axis-CP (red) Axis-CP/Y (yellow) Axis-WCP (waterproof) Axis-CPKEY (spare reset key) Axis-CPKI (transparent cover) Axis-CPFMP (flush mount plate)

### AlarmCalm: False Alarm Management



#### AlarmCalm Button

- Intelligent loop device
- Easy installation
- Used with AlarmCalm software for false alarm verification
- Programmable push button for local silence
- Product code: MXP-541V-002

## Wireless Range

### Industry-Leading Wireless Detection

Advanced's EN54-approved wireless range is easy to install and provides a reliable wireless fire protection solution.

- Operates on 868-870 MHz frequency range
- Fully monitored for faults and system failures
- Internal antenna design protects from environmental conditions, vandalism, accidental damage or misuse
- Intelligent signal processing across 60 communication channels
- Mesh expander technology programmable for redundant path to the translator
- Signal strength increases automatically if there is any interference
- Full analogue data availability, e.g. detector values, wireless link quality, battery level, chamber drift compensation status
- Coverage extends up to 150 metres from translator to detector and 250 metres from translator to expander
- Survey required to establish signal strength
- Dual batteries ensure continued operation should a single battery cell fail
- Can be combined as a hybrid system with wired devices and works with the wired AlarmCalm button

## Detectors

- All Axis EN wireless devices are fully intelligent and compatible with all Axis wireless translator and expander modules
- Unique dual-angle optical chamber design
- Internal algorithm processing optimises performance
- Provides enhanced rejection of alarms from steam, aerosols and dust
- Bi-directional communication protocol between all wireless devices
- Unique inverted cone chamber minimises any dust settlement
- Hexagonal honeycomb mesh design reduces insect ingress and maintains optimum sensitivity to real fires
- Device identification tab
- Dual-angle scattering analysis
- Fast test feature for engineer testing



**Optical Detector**

- Dual photo receivers discriminate between real and unwanted alarms
- Approved to EN54-7 and EN54-25
- Product code: Axis-TOP



**Heat Detector**

- Twin alarm LEDs for 360° visibility
- Multiple sensitivity settings
- Approved to EN54-5 and EN54-25
- Product code: Axis-THT



**Multicriteria Detector**

- Twin alarm LEDs for 360° visibility
- Multiple smoke and heat sensitivity settings
- Approved to EN54-7, EN54-5 and EN54-25
- Product code: Axis-TOH

## Sounders and Sounder Beacons



**Sounder Base**

- Wireless communication between the control panel and the sounder base via the wire to wireless translator interface module using Axis EN protocol
- Communication meets EN 54-25
- Communication range up to 200m in open space
- Bi-colour LED provides visual indication for device status
- 32 selectable tones
- 3 volume levels
- Product code: Axis-TSMB



**Sounder Beacon Base**

- Wireless communication between the control panel and the sounder base via the wire to wireless translator interface module using Axis EN protocol
- The sounder has a supplementary visual indicator that reinforces the audible warning
- Communication meets EN 54-25
- Communication range up to 200m in open space
- Bi-colour LED provides visual indication for device status
- 32 selectable tones
- 3 volume levels
- Product codes: Axis-TSVMB (white flash) Axis-TSVMBRF (red flash)

## Call Points



**Manual Call Point**

- Bi-directional communication protocol between all wireless devices
- Glass appearance maintains operator deterrence
- Visible warning flag confirms activation
- Simple key to reset operating element - no broken glass
- Complete functional test with every activation
- Product code: Axis-TCP

## Wireless Range

### Modules



**Wireless Output Module**

- Bi-directional wireless comms
- Fully supervised for fault conditions (with EOL resistors)
- Changeover relay and 12/24V output
- On site programmable
- 22 pairs of field channels
- Uses dual low-cost lithium battery
- Easy scan and link programming option
- Product code: Axis-TMO (battery powered)



**Wireless Wall Sounder Module**

- Flexible modular design
- Bi-directional wireless communication
- Fits Axis conventional wall sounders and sounder beacons
- Self-optimising wireless communication
- Product code: Axis-TWSM



**Wireless Input Module**

- Bi-directional wireless comms
- Fully supervised for alarm and fault conditions (with EOL resistors)
- 22 pairs of field channels
- Uses dual low-cost lithium battery
- Easy scan and link programming option
- Product code: Axis-TMI

### Translators and Expanders



**Wireless Translator**

- Bi-directional wireless comms
- Long communication range (~1km in open air)
- Compatible with up to 15 expanders
- Loop-powered or external power supply
- Low current consumption
- On-site programming via internal keypad, or wireless/wired PC connection
- Easy scan and link programming option
- Product code: Axis-TMT



**Wireless Expander**

- Bi-directional wireless comms
- Long communication range (up to 1km in open air)
- Connects up to 32 wireless devices per expander
- Compatible with all intelligent and conventional translators
- Requires external power supply
- Low current consumption
- External PSU status supervision
- Easy scan and link programming option
- Product code: Axis-TME

### Accessories



**Sounder Base Covers**

- Product codes: Axis-LID200/R (red) Axis-LID200/W (white)

### Survey Kit



**Wireless Survey Kit**

- Used to test the reliability of the wireless channels or frequency bands used by Axis EN
- Selects those that are less congested for building up the Axis EN wireless system
- Product code: AXIS-TSK



Scan to find out more about our Axis EN range

 **Advanced**



# Advanced Performance. Wireless Versatility.

**Looking for a wireless fire safety system you can trust? Look no further than Advanced.**

With our versatile Axis EN wireless range, it's easy to install robust fire alarm systems whilst saving crucial time, cost and disruption.

Harnessing the power of proven technology, Advanced wireless systems are scalable, adaptable and reliable – for complete fire safety peace of mind.

Creating a safer future



## AlarmCalm Complete False Alarm Management.

Axis EN features the power and flexibility of our in-built AlarmCalm false alarm management and reduction software.

**This offers a unique solution to false alarms that reduces unwanted alarm disruption in a wide range of building types including apartment blocks, supermarket bakeries, manufacturing plants, hospitals and hotels.**

AlarmCalm uses fast hardware, powerful software and optional, intelligent loop devices to build a total solution to false alarms that's versatile and easy to configure. You can design a solution around the needs of your specific site and this can radically reduce the disruption, inconvenience and costs associated with unwanted alarms.

### Optional verification button



This is an intelligent verification device that can be installed on the loop and works with the AlarmCalm software to allow occupants to acknowledge a fire alarm signal locally, if they believe it has been triggered accidentally.

### AlarmCalm features:

- **Versatile cause and effect**  
In-depth control over alarm verification and investigation delays to outputs.
- **Customised management for any site**  
Divide your building(s) into 'building areas', each with quick-to-apply unique or group false alarm management settings. 200 building areas per panel.
- **Unlimited points**  
No restriction on the number of points in a building area and configurable by point.
- **Global acknowledgement**  
Panel inputs can be programmed to manage verification and output delays.
- **Flexible verification**  
Options include: set verification by building area, day/night, on/off, change verification times, verification by second device or device mode change.
- **Full event log**  
All verification and output delays recorded in panel event logs.
- **Multiple verification inputs and outputs**  
Inputs can include optical, heat and multisensors, callpoints and AlarmCalm button or other input modules. Outputs can be sounders, beacons and relays etc. Sounder ring styles can be configured.
- **Failsafe operation**  
Total control over verification times. Users can only extend verification once. Set maximum number of areas in verification before full fire is signalled.
- **Easy management of outputs**  
Output delays are handled in exactly the same way as verifications, making setup very simple.



Scan the QR code to find out more about AlarmCalm

Advanced – made in the UK. Trusted around the world.

Contact us to discuss your wireless fire safety requirements:  
advancedco.com | enquiries@advancedco.com | +44 (0)345 894 7000

 **Advanced**



# TouchControl

Touchscreen. Remote Control Terminal. Active Maps & Zone Plans.

TouchControl is Advanced's innovative remote control terminal and repeater.

Easily installed, its HD display enhances any architectural environment and takes system control and monitoring to the next level.

### Features:

- Attractive, Low-Profile HD Display**  
10"/25.4cm screen enhances prestigious environments.
- Easy Slide-In Installation**  
Two-part slide-in assembly for quick first fix and final install.
- Cost Minimising**  
It's a standalone unit, you don't add cost to the fire panel with a compromised touchscreen.
- Easily Configured**  
Fully active remote control terminal and network device almost immediately after installation.
- Interactive Maps and Zone Plans**  
Easily added, using any diagram via our Map App.
- At-a-Glance System Status**  
Unique interface allows easy monitoring and management of zones and devices.
- Complete Control**  
Three-level access to all the controls you'd find on an Advanced RCT via an easy-to-use interface.
- Customisable Screen**  
Choose from the preloaded background screens or add your own including installer logos. Run promotional presentations. Immediately reverts to fire use when system signal received.

Contact us now for a demo by emailing [enquiries@advancedco.com](mailto:enquiries@advancedco.com)

# Advanced Networking

Our high-performance network technology works across the Axis EN range, delivering the easiest setup and best-performing fire panel networks available.

### Easy connection

- Connect all Axis EN control panels, remote terminals and network peripherals together using fire-resistant two-core cable
- Reduced installation costs
- Caters for the smallest two-panel network through to the largest 200 panel, wide-area, networked system
- Simply add and connect a network card to any Axis EN control panel or remote terminal

### Zoning

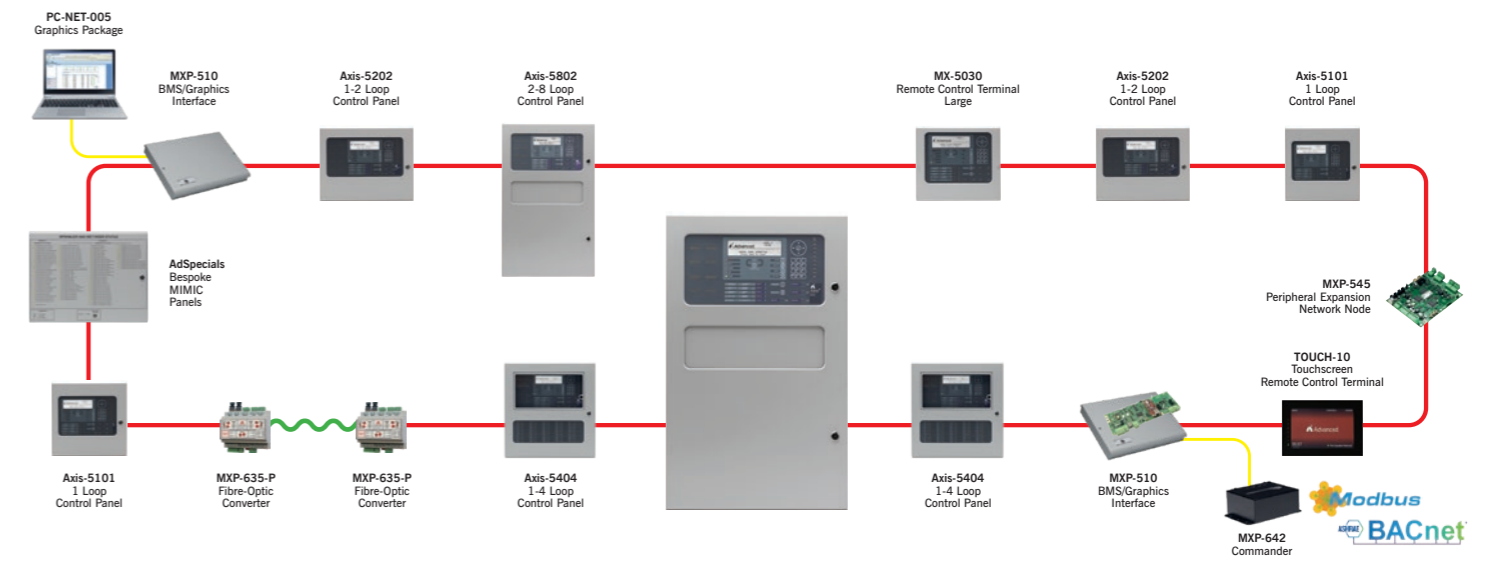
- Networked systems can share up to 2,000 zones
- Autolearning the devices, adding text and assigning zone numbers is easy
- All other nodes on the network are instantly aware of a panel as soon as it is given a valid network node address

### Peer-to-peer system

- Does not rely on a single 'master' panel to function
- Information from any input or output device can be passed over the network and displayed on any Axis EN control panel or remote terminal
- Details include Fire, General Alarm, Pre-Alarm, Fault, Control Inputs and Disablement

### Diagnostic and status information

- All panels provide valuable diagnostic and status information and have the facility to prevent the transmission of fires or faults during commissioning
- DynamixTools software enables easy configuration of complicated cause and effect for more complex systems
- All configuration data is contained within one user-friendly network configuration file



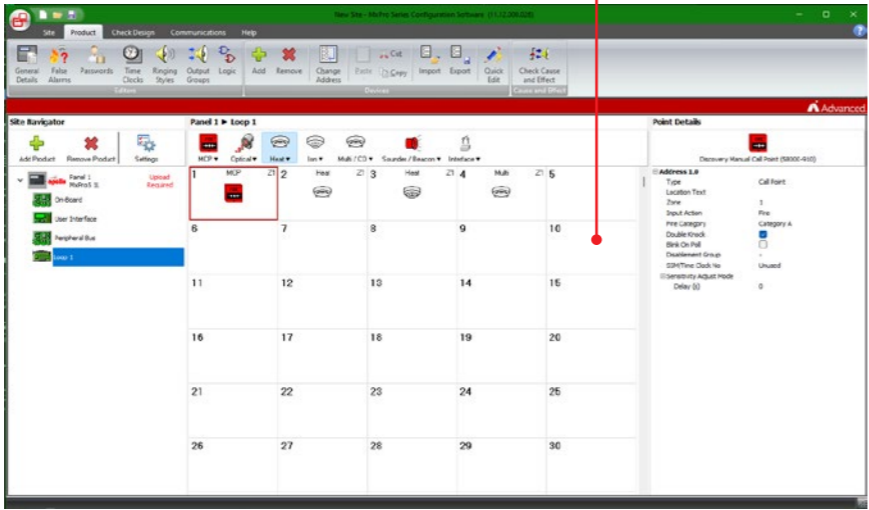
Type of network	Standard	Fault tolerant
Typical use	Sites where one panel per building controls evacuation	Sites where more than one panel per building controls evacuation
Setup	Standard network card: Mxp-503	Fault-tolerant network card: Mxp-509
Maximum cable length	Up to 1.5 km	Up to 1.5 km between nodes
No. of nodes	32 (50 with booster)	200
No. of zones	2,000	2,000
Typical time to communicate first event	1 second	3.5 seconds

# Intuitive Configuration Software

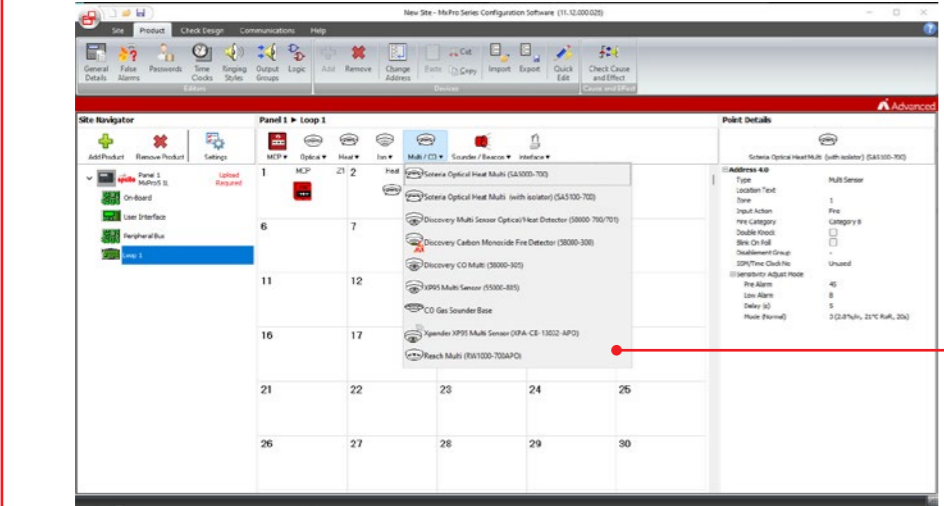
Axis EN uses ConfigTool (PC-Net-022) – for faster, more flexible, fuss-free setup.

## User-friendly interface

- The user interface has been designed with speed and efficiency in mind. You can access most operations from the program menu, aided by a toolbar with descriptions of each function and easy-to-follow icons.
- We've optimised the use of the available screen space to ensure more information is visible. You can see all the devices fitted by address in a grid layout. Simply by selecting an address, you can configure all device inputs and outputs from the same screen.
- It's fast, with no delays even when setting up the largest of site designs.



1 Loop grid with right-hand panel for settings/selections by device

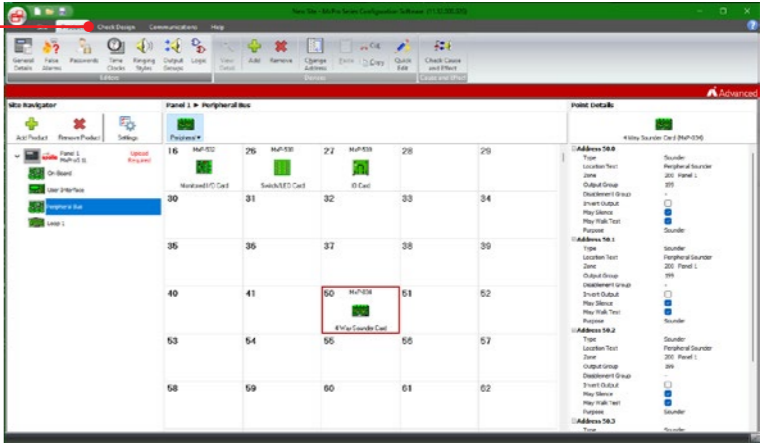


2 Drop-down menu lists make device selection easy

## Design checker

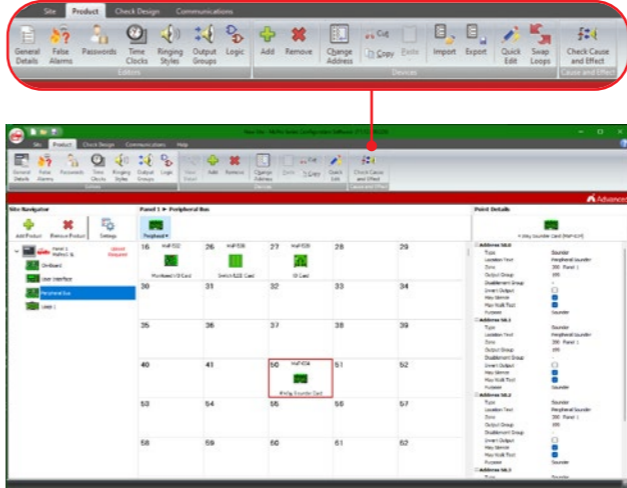
3 Enhanced menu navigation

- You can run an in-depth analysis of over 80 checks to safeguard against common site design issues. By flagging potential problems early, you can avoid uploading flawed designs, and save fault-finding time.



## Cause and effect checking

- A sophisticated cause and effect design checker has been incorporated to allow a site design to be verified as it is constructed. It's possible to prove a design and correct any mistakes without actually having to go to site.



## Fast communication

- Transfer of the configuration settings to/from the panel typically takes just 30 seconds.
- Super-fast file loading saves you time and money, even when working with large, complex site designs.
- You can import from another design and choose from more settings than ever before. Plus, to ensure seamless working between Gen-1 and Gen-2 Axis EN installations, you can import files from PC-Net-003.

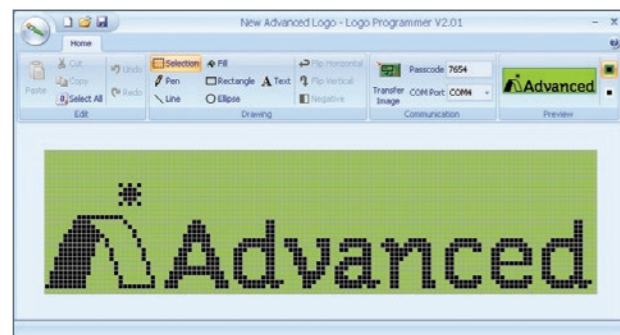
# Versatile Software

In addition to the ConfigTool, you have access to a range of other software designed to make the setup and use of Axis EN panels fast, efficient and flexible.

We are continually developing our software for the Axis EN panel range, adding new features and performance enhancements.

## LogoTool

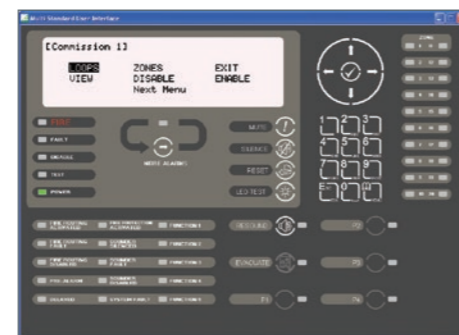
- Allows the installer's logo to be displayed on the panel's graphical LCD display during normal operation
- Uploads standard bitmap images
- Tool allows creation of logos
- JPG and GIF images can be imported



Our position in the global fire industry means we help guide legislation and can implement software changes quickly, keeping our systems right up to date. We also listen closely to our customers and often produce features for specific client requirements.

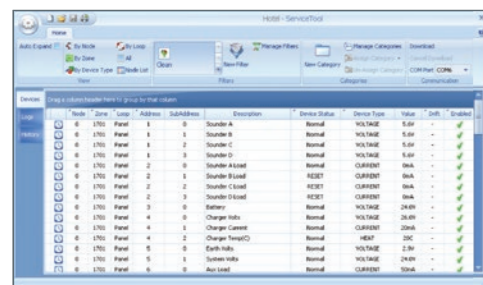
## TerminalTool

- Now part of PC-Net-022
- Virtual panel display supports remote interrogation
- Direct USB/RS232 or remote modem/IP connection
- Real-time status information and control
- TerminalTool (PC-Net-004) is no longer available



## ServiceTool

- Extract device information and event logs from single or multiple panels
- Device history including last activation, test, enable, disable and date created
- User-defined filters allow data to be grouped and searched in many different ways
- View device status, analogue values and drift (contaminated) information
- Network simulation and test feature
- Categorise events and create user-defined reports

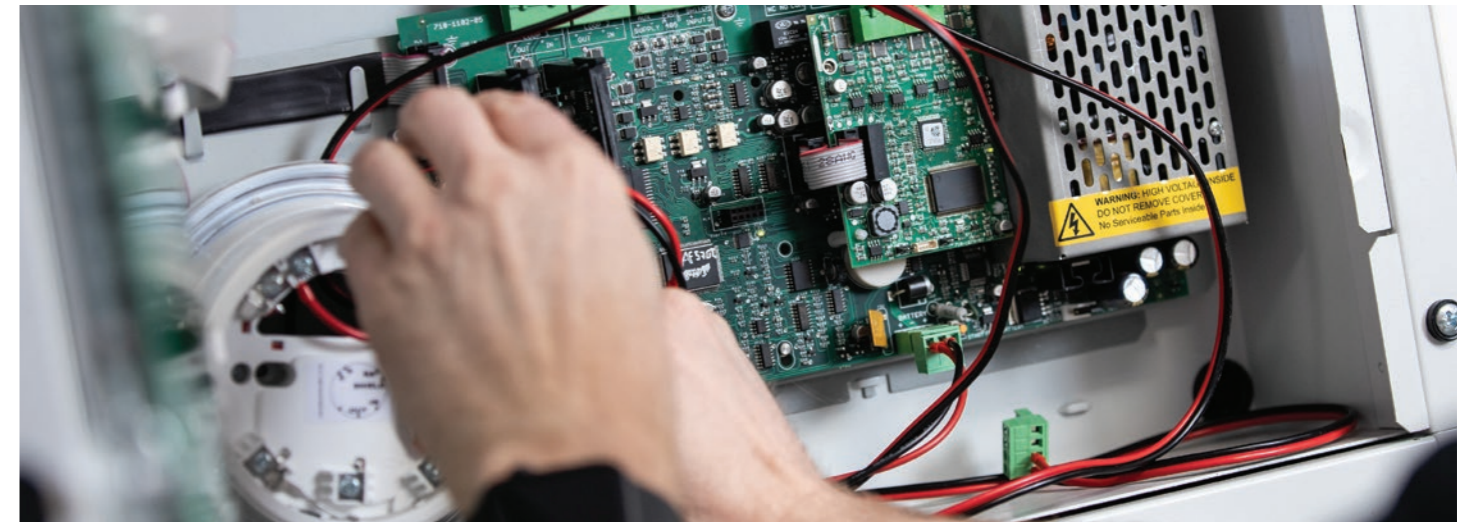


Scan here to find out more about ServiceTool



## MapApp

- Used to easily add site maps to TouchControl touchscreen repeater
- Can use any illustration from a photo to a line drawing, isometric or plan
- Simply draw hotspots onto drawing to add fire zones
- Export to microSD card to add to TouchControl RCT



# Custom-Built Panels

AdSpecials

Advanced fire panels designed and manufactured to your specifications.

When you're facing a complex fire protection challenge, our AdSpecials team will work with you to design and manufacture customised fire panels, control interfaces and enclosures to meet the needs of your site.

The scope of customisation ranges from simple colour coordination to fully bespoke panel housings that offer environmental protection and specialist control and indication.



Contact us on 0345 894 7000 or email enquiries@advancedco.com to discuss your requirements

\*subscription cost applies

# Axis<sup>EN</sup> Parts List

Product Code	Description
<b>Fire Panels</b>	
AXIS-5101	1-Loop Fire Panel – small encl.
AXIS-5101M	1-Loop Fire Panel – medium encl.
AXIS-5101L	1-Loop Fire Panel – large encl.
AXIS-5101D	1-Loop Fire Panel – deep encl.
AXIS-5201	1-2 Loop Fire Panel c/w 1 Loop Card – medium encl.
AXIS-5201L	1-2 Loop Fire Panel c/w 1 Loop Card – large encl.
AXIS-5201D	1-2 Loop Fire Panel c/w 1 Loop Card – deep encl.
AXIS-5401	1-4 Loop Fire Panel c/w 1 Loop Card – large encl.
AXIS-5401D	1-4 Loop Fire Panel c/w 1 Loop Card – deep encl.
AXIS-5401E	1-4 Loop Fire Panel c/w 1 Loop Card – extended encl.
AXIS-5802	2-8 Loop Fire Panel c/w 2 Loop Cards – extended (standard network)
AXIS-5802/FT	2-8 Loop Fire Panel c/w 2 Loop Cards – extended (fault-tolerant network)

All panels are supplied with one loop driver card fitted (for 1, 2 or 4-loop panels) or two loop driver cards for an 8-loop panel. Additional cards can be ordered separately.

Loop Driver Cards	
MXP-568	Loop Driver Card

Remote Terminals	
MX-5010	Remote Display Terminal (RDT)
MX-5020	Remote Control Terminal (RCT) – small
MX-5030	Remote Control Terminal (RCT) – large
MX-5010/FT	Remote Display Terminal (RDT) – fault tolerant
MX-5020/FT	Remote Control Terminal (RCT) – small (fault tolerant)
MX-5030/FT	Remote Control Terminal (RCT) – large (fault tolerant)

TouchControl	
TOUCH-10	Touch-Screen Terminal – standard network
TOUCH-10/FT	Touch-Screen Terminal – fault-tolerant network
TOUCH-10-SBB	Touch-Screen Terminal Surface Back Box

Network Cards	
MXP-503*	Network Card – standard network
MXP-509*	Network Card – fault-tolerant network
MXS-028	Spare Fault-tolerant Network Interface
MXP-030	Standard Network Booster/Isolator – DIN-rail module
MXP-542	24VDC – 24VCD Converter/Isolator
MXP-635-A	Fibre Optic Converter – active
MXP-635-P	Fibre Optic Converter – passive
MXP-635-MM	Fibre Optic Converter Multi-Mode
MXP-635-SM	Fibre Optic Converter Single-Mode
MXP-635-BD/AB	Fibre Optic SFP Module – bi-directional (up)
MXP-635-BD/BA	Fibre Optic SFP Module – bi-directional (down)
MXP-635/VIEW	Fibre Optic iView Commissioning Tool (limited)
MXP-635/COMM	Fibre Optic iView Commissioning Tool (interactive)

\* Add F for fitted

Product Code	Description
<b>Peripherals &amp; P-Bus Expansion Cards</b>	
MXP-034*	4-Way Sounder Card
MXP-035*	4-Way Relay Card
MXP-035-BXP	4-Way Relay Card with 1.5A PSU – boxed
MXP-506	Routing Termination Card
MXP-532*	Routing/Protection Interface
MXP-536*	8-Way Conventional Zone Monitor Card
MXP-537*	10-Way Monitored Input Card
MXP-538	Switch/LED Module – 16 switches, 3 programmable LEDs/switches (red, yellow, green)
MXP-539	Multi-Way I/O Mimic Driver Card – 16 switch inputs and 48 LED outputs
MXP-544*	8-Way Relay Card

\* Add F for fitted

Other Peripherals	
MXP-501	Remote Battery Temperature Sensor
MXP-505	Sounder (Pt13) Active EOL
MXP-507*	2-Way Relay Card
MXP-512*	Printer Assembly
MXS-509	Spare Paper Roll for MXP-512 Printer
MXP-053	2-Way Stretch/Latch Input Module

\* Add F for fitted

AlarmCalm	
MXP-541V-002	AlarmCalm Button with Buzzer

Key Switches	
MXP-511*	Access Enable Key Switch for 5000
MXP-518-001*	Access Enable Key Switch for 5010/5020
MXP-518-002*	Access Enable Key Switch for 5030
MXP-516*	2-Pos Key Switch – trapped
MXP-517*	2-Pos Key Switch – untrapped
MXP-519*	2-Pos Key Switch – momentary (trapped)
MXP-515*	3-Pos Key Switch – untrapped all positions
MXP-515T*	3-Pos Key Switch – key-free in centre position only
MXS-511-KEY	Spare MXP-511 Access Enable Key

\* Add F for fitted

Network Peripherals	
MXP-545	PENN – standard network
MXP-545/FT	PENN – fault-tolerant network
MXP-046	Damper Interface Module (Apollo protocol)
MXP-046-BX1	Damper Interface Module – boxed (Apollo protocol)
MXP-547*	ESPA Pager Interface
MXP-547-BX	ESPA Pager Interface – boxed

\* Add F for fitted

Product Code	Description
<b>LED Indication</b>	
MXP-513M-050RD*	50 Zone Fire (red)
MXP-513M-050RY*	50 Zone Fire (red) + Fault (yellow)
MXP-513M-050YL*	50 Zone Fault (yellow)
MXP-513L-050RD*	50 Zone Fire (red)
MXP-513L-050RY*	25 Zone Fire (red) + Fault (yellow)
MXP-513L-050YL*	50 Zone Fault (yellow)
MXP-513L-100RD*	100 Zone Fire (red)
MXP-513L-100RY*	50 Zone Fire (red) + Fault (yellow)
MXP-513L-100YL*	100 Zone Fault (yellow)
MXP-513L-200RY*	200 Zone Fire (100 x red) + Fault (100 x yellow)
MXP-513L-050CRY*	50 Zone Column Format – Fire (red) + Fault (yellow)
MXP-513L-050CRYG*	50 Zone Column Format (30 x red/yellow and 20 x green/yellow)
MXP-513-050RD*	50 Zone Fire (red)
MXP-513-050RY*	25 Zone Fire (red) + Fault (yellow)
MXP-513-050YL*	50 Zone Fault (yellow)
MXP-513-100RD*	100 Zone Fire (red)
MXP-513-100RY*	50 Zone Fire (red) + Fault (yellow)
MXP-513-100YL*	100 Zone Fault (yellow)
MXP-513-200RY*	200 Zone Fire (100 x red) + Fault (100 x yellow)
MXP-513-050CRY*	50 Zone Column Format – Fire (red) + Fault (yellow)
MXP-513-050CRYG*	50 Zone Column Format (30 x red/yellow and 20 x green/yellow)

\* Add F for fitted

BMS Interface	
MXP-510-BX	BMS/Graphics Interface – boxed
MXP-510-BX/FT	BMS/Graphics Interface – boxed (fault tolerant)
MXP-510	BMS/Graphics Interface – card only
MXP-510/FT	BMS/Graphics Interface – card only (fault tolerant)
MXP-642	Commander-BACnet/Modbus (IP) Interface (Standard/Basic) – requires BMS-510
MXP-642C	Commander-BACnet/Modbus (IP) Interface (Configured) – requires BMS-510
23-PSU/250	Commander Power Supply – 12VDC 2.5A

Graphics Software	
PC-NET-005-L1	Graphical Control Software – standard (up to 3 panels)
PC-NET-005-L2	Graphical Control Software – standard (up to 15 panels)
PC-NET-005-L2P	Graphical Control Software – premium (up to 15 panels)
PC-NET-005-L3	Graphical Control Software – standard (up to 200 panels)
PC-NET-005-L3P	Graphical Control Software – premium (up to 200 panels)
PC-NET-005-SWM	Smart Watch Module
PC-NET-005-SWM4R	Smart Watch Module (4 inputs)
PC-NET-005-SWM6	Smart Watch Module (4-6 panels)
PC-NET-005-SWM15	Smart Watch Module (7-15 panels)
PC-NET-005-SCU	Smart Cube Unit
PC-NET-005-L1R-L2R	Dongle Upgrade L1R to L2R
PC-NET-005-L2R-L3R	Dongle Upgrade L2R to L3R
PC-NET-005-L2R-L2P	Dongle Upgrade L2R to L2P
PC-NET-005-L2P-L3P	Dongle Upgrade L2P to L3P
PC-NET-005-L3R-L3P	Dongle Upgrade L3R to L3P

Product Code	Description
<b>Cables</b>	
UP-001	FS232 9-Way to 3-Way Plug-In Connector – upload/download lead
UP-006	USB Upload/Download Lead for Config Software
UP-015	USB Lead (2M A-B Type)
UP-017	Serial to Ethernet Interface (Moxa)

Power Supplies	
MXP-549	1.5A 24V EN54-4 PSE & Charger – boxed (7Ah battery)
MXP-549-12V	1.5A 12V EN54-4 PSE & Charger – boxed (7Ah battery)
MXP-650	3A 24V EN54-4 PSE & Charger – boxed (17Ah battery)
MXP-650/D	3A 24V EN54-4 PSE & Charger – boxed (38Ah battery)
MXP-651	5A 24V EN54-4 PSE & Charger – boxed (17Ah battery)
MXP-651/D	5A 24V EN54-4 PSE & Charger – boxed (38Ah battery)

Spare (Caged) PSUs	
MXS-049	Spare 1.5A EN54-4 PSU & Battery Charger
MXS-650	Spare 2.5A EN54-4 PSU & Battery Charger
MXS-651	Spare 5.0A EN54-4 PSU & Battery Charger

Panel Kits and Spares	
MXS-011	Spare Panel Door Key
MXS-013	Spare Panel Lock and Key
MXS-505	Spare Glazed Door key
MXS-518	MX-5000 Control Panels Spares Kit
MXS-520	MX-5000 Remote Terminals Spares Kit
MXS-521	MX-5000 Battery Leads
MXS-519	MX-5000R Rack Mount Spares Kit
MXS-522	MX-5000R Battery Leads
MXS-5-FP-S	Spare Fascia Plate and Membrane
MXS-5-FP-ML	Spare Fascia Plate and Membrane

Spare Base Cards	
MXS-501-CP-S	Spare 5100 Basecard w Small Chassis
MXS-501-CP-M	Spare 5100 Basecard w Med Chassis
MXS-501-PCB	Spare 5100 1 Loop Basecard PCB – no loop cards (programmed)
MXS-501-PSU	Spare 5100 1 Loop Basecard – PSU only
MXS-502-CP	Spare 5200 Basecard w Med Chassis
MXS-502-PCB	Spare 5200 1 Loop Basecard PCB – no loop cards (programmed)
MXS-502-PSU	Spare 5200 1 Loop Basecard – PSU only
MXS-503-CP	Spare 5400 Basecard w Lrg Chassis
MXS-503-CP-E	Spare 5400 Basecard w Ext Chassis
MXS-503-PCB	Spare 5400 1 Loop Basecard PCB – no loop cards (programmed)
MXS-503-PSU	Spare 5400 1 Loop Basecard – PSU only
MXS-504	Spare Display card
MXS-506	Spare MX-5010 Card only
MXS-506/FT	Spare MX-5010 Card only – fault-tolerant network
MXS-507	Spare MX-5020 Card Only
MXS-507/FT	Spare MX-5020 Card Only – fault-tolerant network
MXS-508	Spare MX-5030 Card Only
MXS-508/FT	Spare MX-5030 Card Only – fault-tolerant network

Small Enclosure Spares	
MXM-501	Semi-Flushing Bezel
MXM-522-BB	Spare Back Box
MXM-522-D1	Spare Door
MXM-522-CP	Spare Chassis Mtg Plate

# Axis<sup>EN</sup> Parts List

Product Code	Description
<b>Medium Enclosure Spares</b>	
MXM-502	Semi-Flushing Bezel – MX-5000
MXM-508	Glazed Door Kit – medium
MXM-508Z	Glazed Door Kit – medium (double aperture)
MXM-523-BB	Spare Back Box
MXM-523-D1	Spare Door
MXM-523-D2	Spare Door (c/w zone aperture)
MXM-523-CP	Spare Chassis Mounting Plate

Large/Deep Enclosure Spares	
MXM-503	Semi-Flushing Bezel – MX-5000
MXM-507	Glazed Door Kit – large/deep
MXM-507Z	Glazed Door Kit – large/deep (double aperture)
MXM-524-BB	Spare Back Box
MXM-525-BB	Spare Back Box – deep enclosure
MXM-524-D1	Spare Door
MXM-524-D2	Spare Door – c/w zone aperture
MXM-524-D3	Spare Door – c/w 2 x switch apertures
MXM-524-D4	Mimic Door with Single Aperture
MXM-524-D5	Blank Door
MXM-524-CP	Spare Chassis Mounting Plate

Extended Enclosure Spares	
MXM-536	Semi-Flushing Bezel
MXM-538-D1	Glazed Door Kit – extended (zone aperture)
MXM-538-D2	Glazed Door Kit – extended (2 x glazed apertures)
MXM-538-D3	Glazed Door Kit – extended (mimic aperture)
MXM-537-BB	Spare Back Box
MXM-537-D1	Spare Door
MXM-537-D2	Spare Panel Door with Mimic Aperture
MXM-537-BP	Blank Plate for Zone LED Aperture

Repeater Enclosure Spares	
MXM-521	Semi-Flushing Bezel – MX-5010 / 5020
MXM-509	Semi-Flushing Bezel – MX-5030 RCT – large
MXM-543-BB	Spare back-box – MX-5010 / 5020
MXM-544-BB	Spare back-box – MX-5030 RCT – large
MXM-543-D1	Spare panel cover – MX-5010 / 5020
MXM-543-D2	Spare panel cover + K/S app – MX-5010 / 5020
MXM-544-D1	Spare panel cover – MX-5030 RCT – large
MXM-544-D2	Spare panel cover + K/S app – MX-5030 RCT – large

Other Enclosure Spares	
MXM-516	Battery (18Ah) / Utility Enclosure – medium
MXM-517	Battery (18Ah) / Utility Enclosure – large
MXM-546	Battery (45Ah) Enclosure – deep
MXM-518	Utility Enclosure – deep
MXM-519	Chassis mounting plate for Utility Enclosure (3 cards)
MXM-531	Document Enclosure – medium
MXM-532	Document Enclosure – large
MXM-533	Modem/ESPA/BMS Interface Enclosure
MXM-504	Termination Enclosure – medium
MXM-505	Termination Enclosure – large
MXM-506	Termination Enclosure – deep
MXM-530	Cable Clamp

Product Code	Description
<b>Small Enclosure Special Finishes</b>	
MXM-501-SSB	Semi-Flushing Bezel – stainless steel brushed
MXM-522-D1-SSB*	Spare Door – stainless steel brushed
MXM-522-BB-SSB	Spare Back Box – for use with stainless steel door (MW334E)
* Add F for fitted	

Medium Enclosure Special Finishes	
MXM-502-SSB	Semi-Flushing Bezel – stainless steel brushed
MXM-523-D1-SSB*	Spare Door. Stainless steel brushed
MXM-523-D2-SSB*	Spare Door (c/w zone aperture) – stainless steel brushed
MXM-523-BB-SSB	Spare Back box for use w stainless steel door (MW334E)
* Add F for fitted	

Large/Deep Enclosure Special Finishes	
MXM-503-SSB	Semi-Flushing Bezel – stainless steel brushed
MXM-524-D1-SSB*	Spare Door – stainless steel brushed
MXM-524-D2-SSB*	Spare Door (c/w zone aperture) – stainless steel brushed
MXM-524-BB-SSB	Spare Back Box – for use with stainless steel door (MW334E)
* Add F for fitted	

Repeater Enclosure Special Finishes	
MXM-521-SSB	Semi-Flushing Bezel – MX-5010/5020 (stainless steel brushed)
MXM-509-SSB	Semi-Flushing Bezel – MX-5030 Large RCT (stainless steel brushed)
MXM-543-D1-SSB	Panel Cover – MX-5010/5020 (stainless steel brushed)
MXM-543-D2-SSB	Panel Cover & Key Switch Aperture – MX-5010/5020 (stainless steel brushed)
MXM-544-D1-SSB	Panel Cover – MX-5030 Large RCT (stainless steel brushed)
MXM-544-D2-SSB	Panel Cover & Key Switch Aperture – MX-5030 large RCT (stainless steel brushed)

Rack Mount Panels	
MX-5401VR	1-4 Loop Fire Panel c/w 1 Loop Card
Extra loop cards can be ordered using MXP-568	

Rack Mount LED Indication	
MXP-513R-050RD	4U LED Card 50 Zone Fire (red)
MXP-513R-050RY	4U LED Card 50 Zone Fire (red) + Fault (yellow)
MXP-513R-050YL	4U LED Card 50 Zone Fault (yellow)
MXP-513R-100RD	4U LED Card 100 Zone Fire (red)
MXP-513R-100RY	4U LED Card 100 Zone Fire (red) + Fault (yellow)
MXP-513R-100YL	4U LED Card 100 Zone Fault (yellow)
MXP-513R-200RY	4U LED Card 200 Zone Fire (red) + Fault (yellow)
MXP-513R-050CRY	4U LED Card 50 Zone Column Format – Fire (red) + Fault (yellow)
MXP-513R-050CRYG	4U LED Card 50 Zone Column Format (30 x red/yellow and 20 x green/yellow)

Product Code	Description
<b>Rack Mount Spares</b>	
MXM-510-16U	IP55 19" Rack Mount Enclosure – 16U high
MXM-510-20U	IP55 19" Rack Mount Enclosure – 20U high
MXM-510-KL	CAM Key-Lock Kit for Outer Door
MXM-510-BS	Battery Shelf
MXM-510-BS1	Battery Shelf Lower
MXM-510-CP	Chassis Plate
MXM-511-1U	Blanking Plate – 1U
MXM-511-2U	Blanking Plate – 2U
MXM-511-3U	Blanking Plate – 3U
MXM-511-4U	Blanking Plate – 4U
MXM-511-5U	Blanking Plate – 5U
MXM-511-6U	Blanking Plate – 6U
MXM-511-7U	Blanking Plate – 7U
MXM-511-8U	Blanking Plate – 8U
MXM-511-9U	Blanking Plate – 9U
MXM-511-1U-TOP	Blanking Plate – 1U-TOP
MXM-512	Blanking LED Plate – 4U
MXM-513-BB	6U Back Box
MXM-515-6U	6U Chassis Plate
MXM-513-D1	6U Door D1 Blank
MXM-513-D2	6U Door D2 LED
MXM-513-D3	6U Door D1 c/w Aperture
MXM-513-BP	6U Switch/LED Blank Plate
MXM-513-MF	6U Switch/LED Mounting Frame
MXM-513-FP	6U Fascia Plate Blank
MXM-514-BB	8U Back Box
MXM-515-8U	8U Chassis Plate
MXM-514-D1	8U Door D1 c/w Aperture
MXM-514-FP	8U Fascia Plate Blank
MXM-535-D1	13U Hinged Door – for 9 x MXP-538 or blank plates

Intelligent Detectors and Bases	
AXIS-OPX	Axis EN Optical Detector with Isolator
AXIS-OHX	Axis EN Multi-Detector with Isolator (optical/heat)
AXIS-HTX	Axis EN Heat Detector with Isolator
AXIS-OP	Axis EN Optical Detector
AXIS-OH	Axis EN Multi-Detector (optical/heat)
AXIS-HT	Axis EN Heat Detector
AXIS-MB	Axis Mounting Base

Duct Detectors	
AXIS-DDH	Duct Detector Housing with Axis Mounting Base
20-DDH-ST0.6-ADV	0.6m Sampling Tube
20-DDH-ST1.5-ADV	1.5m Sampling Tube
20-DDH-ST2.8-ADV	2.8m Sampling Tube
20-DDH-BRA-ADV	Duct Detector Bracket

Intelligent Call Points	
AXIS-CP	Axis EN Manual Call Point (red)
AXIS-CP/Y	Axis EN Manual Call Point (yellow)
AXIS-WCP	Axis EN Waterproof Manual Call Point (red)
AXIS-CPKEY	Spare Reset Key for Axis EN Call Point
AXIS-CPCI	Transparent Cover for Axis-CP (no text)
AXIS-CPFMP	Wall Flush Mount Plate with external Frame (red) for Axis-CP

Sounders	
AXIS-S2MB	Axis EN Sounder Base, Intelligent
AXIS-S2AMB	Axis EN Slave Sounder Base
AXIS-CWS	Conventional Wall Sounder (red)
AXIS-CWS/W	Conventional Wall Sounder (white)
AXIS-WSM	Intelligent Sounder Interface Module

Product Code	Description
<b>Sounder-Beacons</b>	
AXIS-SV2MB	Axis EN Sounder Beacon Base, Intelligent (white LED)
AXIS-SV2MBRF	Axis EN Sounder Beacon Base, Intelligent (red LED)
AXIS-SV2AMB	Axis EN Slave Sounder Beacon Base (white LED)
AXIS-CWSV	Conventional Wall Sounder Beacon (red)
AXIS-CWSV/W	Conventional Wall Sounder Beacon (white)
20-CBE1002	Conventional VAD [EN54-23] (requires base)

Single Input/Output/Relay Modules	
20-VM1100-ADV	Monitored Input Module
20-VMM1100-ADV	Mini Monitored Input Module
20-VMC100-ADV	Monitored Output Module
20-VMMC100-ADV	Mini Monitored Output Module
20-VMC120-ADV	Relay Output Module
20-VMMC120-ADV	Mini Relay Output Module

Multi Input/Output/Relay Modules	
20-VMIC100-ADV	Monitored Input/Output Module
20-VMMIC100-ADV	Mini Monitored Input/Output Module
20-VMIC120-ADV	Monitored Input/Relay Output Module
20-VMMIC120-ADV	Mini Monitored Input/Relay Output Module
20-VMIC404-ADV	4 Input/4 Relay Output Module
20-VMDIC404-ADV	4 Input/4 Relay Output Module DIN Rail Mount
20-VMIC602-ADV	6 Input/2 Relay Output Module
20-VMIC422-ADV	4 Input/2 Relay Output/2 Monitored Output Module
20-VMCZ100-ADV	Conventional Zone Module

Accessories	
AXIS-PU	Axis EN Device Programming Unit
AXIS-WP	Silicon Base Gasket
20-F1100-ADV	Remote Indicator
20-WHCP-BBC	Weatherproof Call Point Housing with Clear Back Box
20-WHCP-BBR	Weatherproof Call Point Housing with Red Back Box
AXIS-LID200/R	Cover for Axis EN Sounder Base Red (pack of 5)
AXIS-LID200/W	Cover for Axis EN Sounder Base White (pack of 5)

Wireless Detectors	
AXIS-TOP	Axis EN Optical Detector
AXIS-THT	Axis EN Heat Detector
AXIS-TOH	Axis EN Multi-Detector (optical/heat)

Wireless Call Point	
AXIS-TCP	Axis EN Call Point (red)

Wireless Sounders & Sounder-Beacons	
AXIS-TSMB	Axis EN Base Sounder
AXIS-TSVMB	Axis EN Base Sounder VAD (white LED)
AXIS-TSVMBRF	Axis EN Base Sounder VAD (red LED)
AXIS-TWSM	Axis EN Wall Sounder Module

Wireless Modules	
AXIS-TMT	Axis EN Translator
AXIS-TME	Axis EN Expander
AXIS-TMI	Axis EN Input Module
AXIS-TMO	Axis EN Battery Output Module

Wireless Accessories	
AXIS-TSK	Axis EN Survey Kit
AXIS-LID200/R	Cover for Axis EN Sounder Base Red (pack of 5)
AXIS-LID200/W	Cover for Axis EN Sounder Base White (pack of 5)



**Email:** [enquiries@advancedco.com](mailto:enquiries@advancedco.com)  
**Web:** [www.advancedco.com](http://www.advancedco.com)



Axis EN, AxisGo and all other Advanced product brands are trademarks of Advanced Electronics Ltd. All rights reserved.



A **Halma** company