

EasySafe addressable emergency luminaires and exit signs are a low-voltage option which complements our high-performing LuxIntelligent emergency lighting system.

All EasySafe emergency luminaires draw power directly from the LuxIntelligent testing panel via the 32V data cable. This means they operate between 18-32V DC and fall well below the Low Voltage Directive, meaning they can be installed and maintained by non-qualified electricians. The low-voltage lights are quick and easy to fit and service with a simple 'twist and click' installation onto a first-fix base.

EasySafe has been designed to offer true scalability. Just one LuxIntelligent panel

supports up to 200 EasySafe devices, and because they can work alongside standalone 230V luminaires, an additional 796 locally-powered devices can be included on the same system. For even greater flexibility, a single panel can be networked with an almost unlimited number of additional panels via the LuxIntelligent cloud platform.

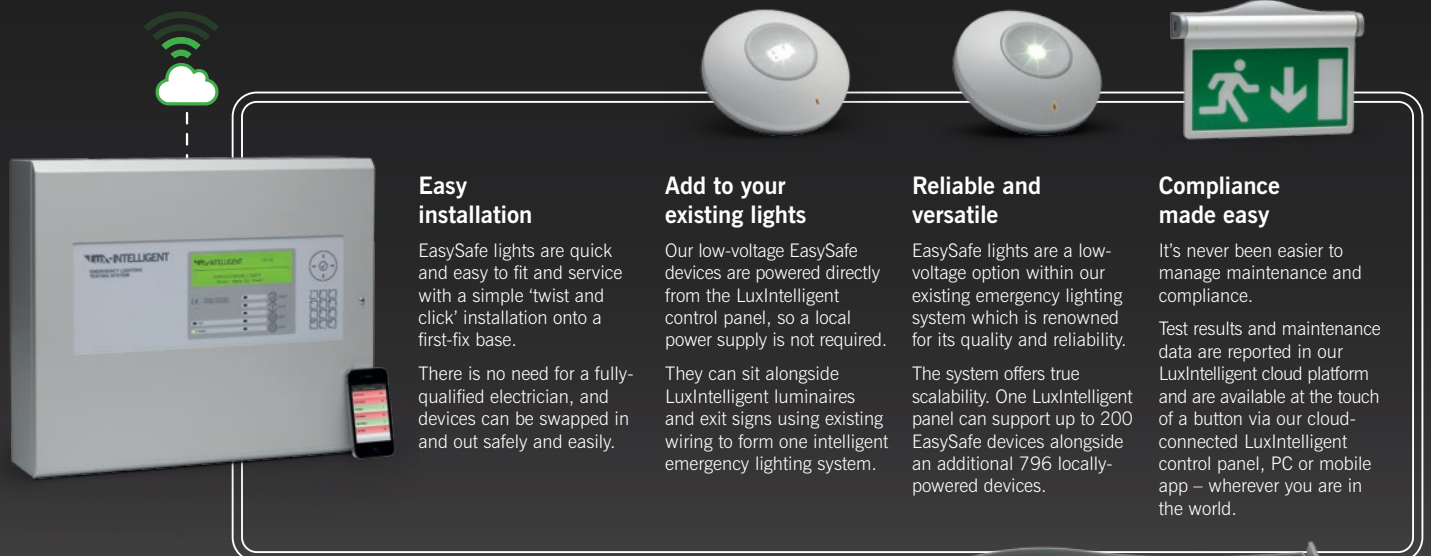


Compliance and maintenance are easy as the LuxIntelligent cloud platform enables you to view all test results and maintenance data at the touch of a button via your mobile, tablet or web browser

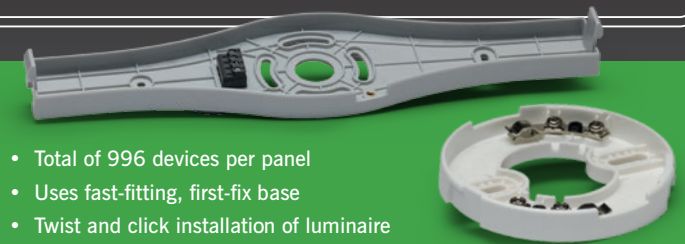
Intelligent low-voltage emergency lights



- * No 230V connection required**
- * Low-voltage**
- * Self-testing/reporting**
- * Draws power directly from the 32V DC data cable**
- * Fast installation**
- * Addressable**



- Up to 4 loop cards (8-loop variant available on request)
- Network panels via LAN or LuxCloud
- 50 EasySafe devices per loop card
- Maximum of 200 EasySafe devices per 4-loop panel
- 199 additional standard LuxIntelligent devices per loop card
- Maximum of 796 additional standard LuxIntelligent devices
- Runs on 32V DC from the panel (no 230V fitting required)



- Total of 996 devices per panel
- Uses fast-fitting, first-fix base
- Twist and click installation of luminaire
- Complies with BS EN 60598-2-22
- Downlighters and exit signs available