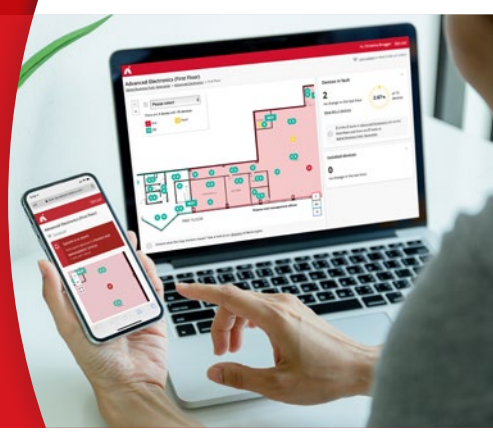


# AdvancedLive

## Overview



### What is AdvancedLive?

**AdvancedLive is a digital representation of your Advanced fire system that lets you remotely monitor and control your fire panel and devices – wherever you are, whenever you want.**

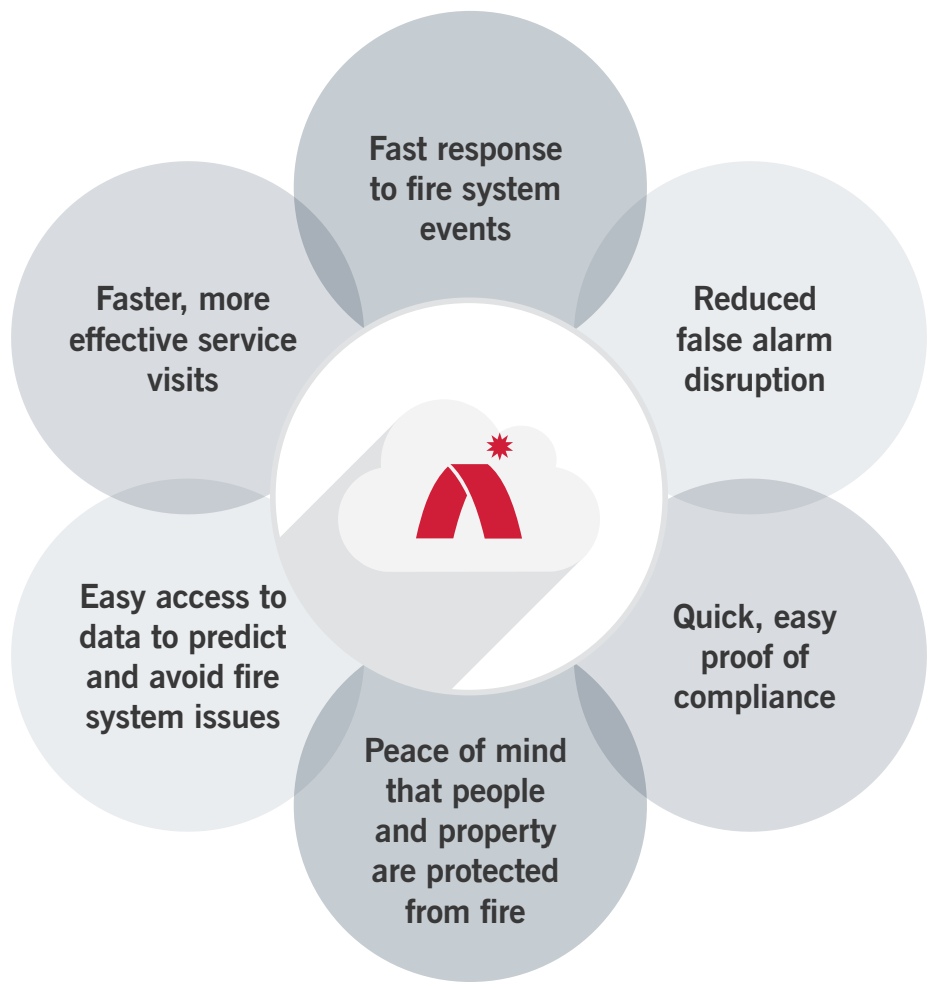
Information from your fire system is stored in the Cloud and presented in the AdvancedLive software, which you can access via any internet-enabled device.

AdvancedLive displays all the information you need to check the status of your fire system and instantly notifies you of incidents needing your attention.

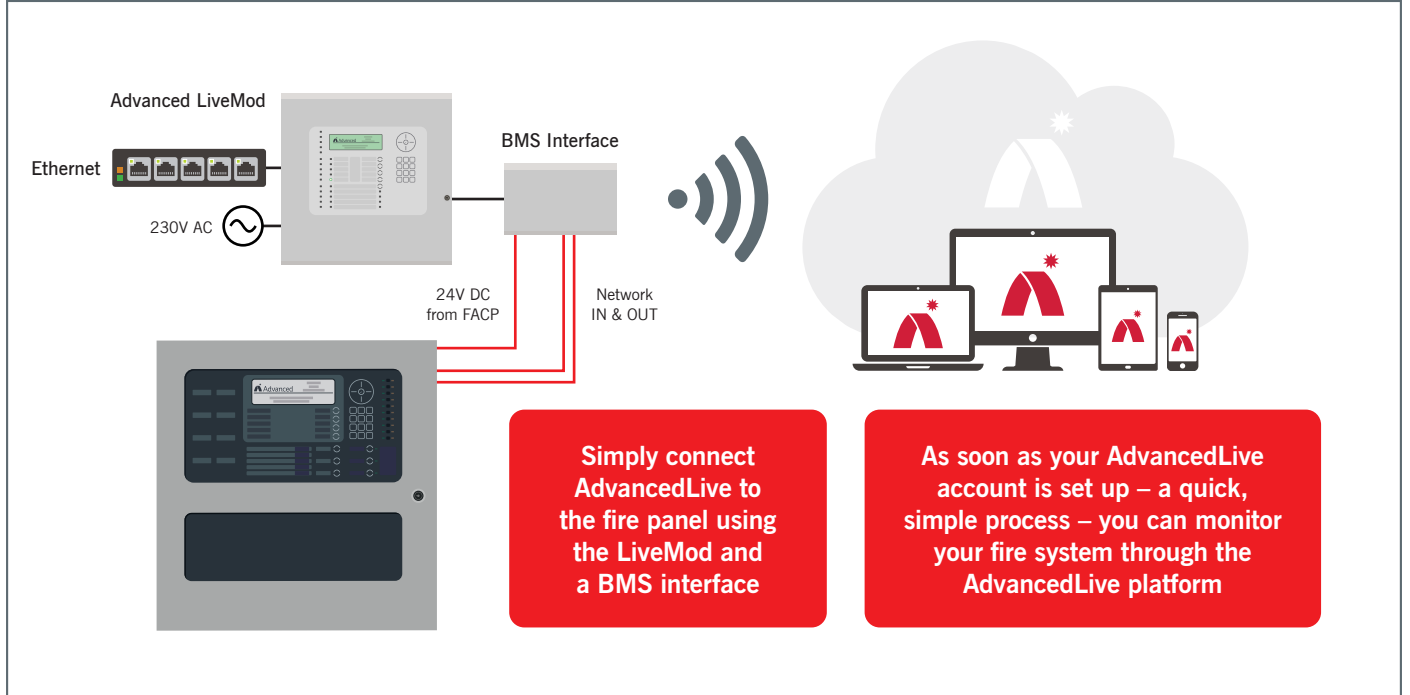
It lets you carry out essential fire system tasks without you needing to be at the panel, and provides device history for easy proof of compliance and complete fire safety peace of mind.

### Instant benefits

Setting up AdvancedLive on your Advanced fire system is fast, fuss free and brings you instant benefits.



### AdvancedLive setup

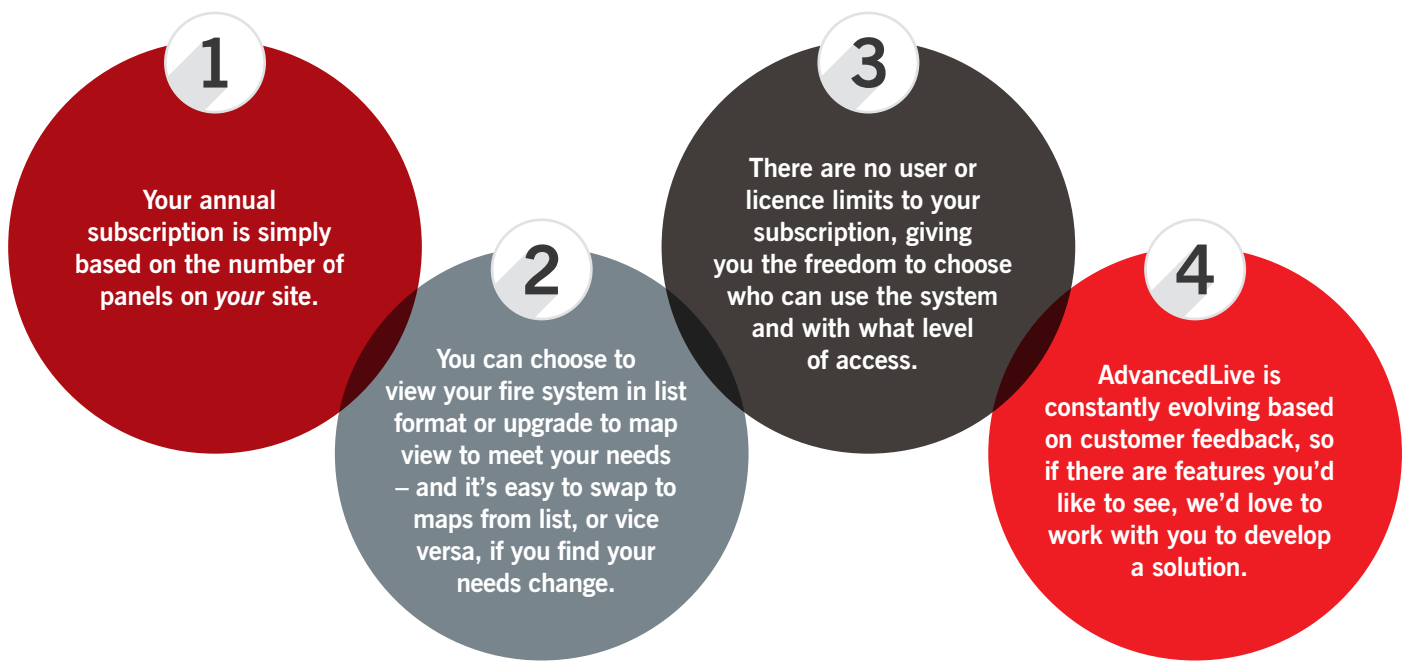


### How AdvancedLive will help you

<h4>Improved protection</h4> <ul style="list-style-type: none"> <li>AdvancedLive <b>improves fire protection and safety</b> by instantly notifying you of any fire events as they occur – and as they evolve.</li> <li>Real-time fire alerts, that are clear and simple to understand, ensure <b>the fastest possible response times</b>.</li> <li>Helps you make quick, effective decisions for optimum safety and minimum disruption.</li> </ul>	<h4>Quick, easy access and assurance</h4> <ul style="list-style-type: none"> <li>AdvancedLive makes it <b>quick and easy to remotely check on fire system status</b> – wherever you are, whenever you want – for complete peace of mind.</li> <li>As a digital representation of your physical fire equipment, all panel and device data is <b>easily accessible</b> to named users.</li> <li><b>Saves time</b> travelling to site to check the system and ensures necessary site visits are well planned and efficient.</li> </ul>
<h4>Clear and simple</h4> <ul style="list-style-type: none"> <li>Operating and understanding fire panels can be challenging for untrained users. AdvancedLive presents panel data – perfectly synchronised with the physical fire system – in a <b>clear, simple format</b>.</li> <li>Any devices needing attention are <b>clearly highlighted on easy-to-view tiles</b> so you can attend to them quickly.</li> <li>For added convenience, you can choose to view your fire system using <b>map or list view</b>, depending on your needs and the characteristics of your site.</li> </ul>	<h4>Ease of compliance</h4> <ul style="list-style-type: none"> <li>AdvancedLive features <b>real-time device status information</b> to help you save time, improve efficiency, and stay on top of your servicing obligations.</li> <li>AdvancedLive logs the date and time of tests so you can <b>clearly see</b> which devices are due for inspection and plan service visits accordingly.</li> <li><b>Clear, simple visuals</b> to understand the devices that are in fault or isolated and provide device history to identify trends and prevent issues.</li> </ul>

### Designed around you

We understand that no two sites or fire systems are the same and all fire system users have different needs and preferences. So, we've made AdvancedLive flexible in four ways:



### In summary

- ✓ Confidence that your system is fully compliant
- ✓ Reassurance that the fire system is protecting people and property at all times
- ✓ Immediate fire event alerts via text message, giving you maximum time to evaluate, respond, ensure safety and avoid false alarms/evacuations
- ✓ Shared access between end users and service providers for fast, efficient resolution of issues
- ✓ Device history, system status data and testing log at your fingertips for easy proof of compliance